

# Overlay Mosaic Crochet Tutorial

by Natalia Kononova



## Skill Level

- Intermediate

## Materials and Tools

- **DK/ #3/ 8ply yarn such as Scheepjes Scrumptious** (50% Recycled Polyester (recycled plastic bottles) x 50% Acrylic, DK/ 100g/ 300m/ 328yds)  
Get from:\* [Wool Warehouse](#) (UK, US), [Caro's Atelier](#) (Netherlands), [Jimmy Beans](#) (US), [Knitkat](#) (Belgium)  
**Yarn1** (berries) in red/ 365 Summer Pudding  
**Yarn2** (background) in gold/ 311 Chai Shortbread  
**Yarn3** (leaves) in green/ 349 Rainforest Cake
- Crochet hooks 4mm or size to obtain gauge

## Standard abbreviations (American crochet terminology)

"	inches	dc2tog	2 dc together	prev	previous
*	rep instructions for single * as directed	dec	decrease	rem	remain(ing)
*...*	rep instructions bet **'s as many times as noted after	dtr	double treble	rep	repeat
[ ], { }	rep instructions bet [ ]'s or { }'s as many times as noted after	est	extended st	RH	right hand
approx	approximately	edc	extended dc	rnd(s)	round(s)
beg	begin/beginning	flo	through front loop only	RS	right side
bet	between	FLst	st made in front loop	sc	single crochet
blo	through back loop only	fnd	foundation	sc2inc	2 sc in same st
BLst	st made in back loop	FPst	st made in front post	sc2tog	2 sc together
BPst	st made in back post	g	gram(s)	sk	skip
ch	chain	hdc	half double crochet	sl st, ss	slip stitch
ch-# sp	chain space	inc	increase	sp(s)	space(s)
cm	centimeter(s)	LH	left hand	st(s)	stitch(es)
con	connecting	lp(s)	loop(s)	tog	together
cont	continue	leg	part of decrease	tr	treble crochet
dc	double crochet	m	marker	tr2inc	2 tr in same st
dc2inc	2 dc in same st	mm	millimeter(s)	tr2tog	2 tr together
		oz	ounce	ttr	triple treble
		p	picot	WS	wrong side
		PU	pick up	yd(s)	yard(s)
		pm	place marker	yo	yarn over
		pr	previous row		

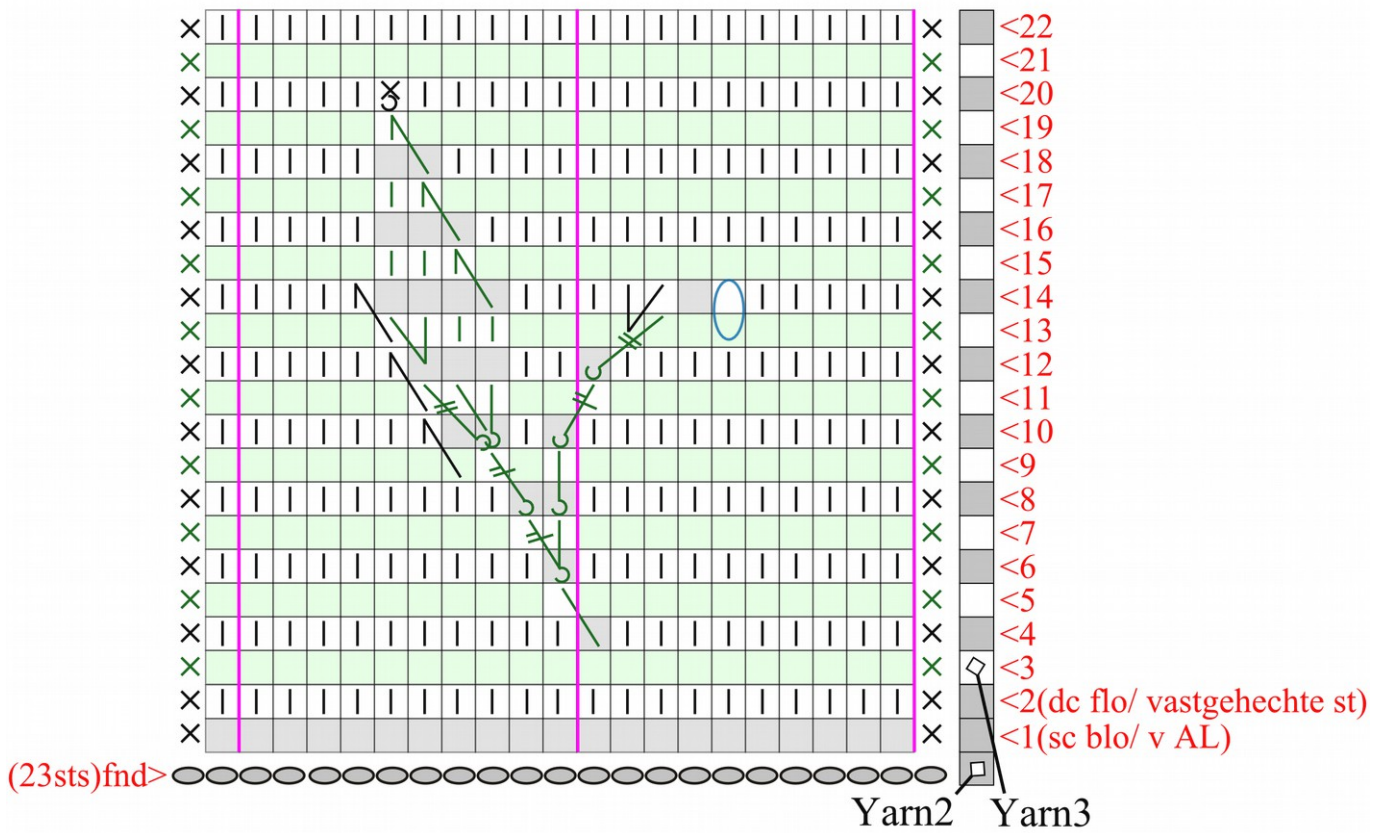
## Rules for mosaic crochet

- **Overlay mosaic crochet** is worked on **right side (RS) only**.
- **Sc (empty blocks on charts):** made in stitches from prev row through back loop only. Abbreviation *blo* (back loop only) is skipped to simplify instructions.
- **Dc, increases and decreases:** drop down stitches, made in stitches from corresponding color row (2<sup>nd</sup> row down) and through front loop only. Abbreviation *flo* (front loop only) is skipped to simplify instructions.
- **Each row** is made with **one color**.

## Videos

- **Foundation cord:** <https://youtu.be/D2qUB8t4uc8>
- **Swatch with leaf and berry:** <https://youtu.be/edeUOGn4urg>
- **Gauge swatch for joined dc:** <https://youtu.be/M3P5Kw6Wwfw>

**Chart:**



**Chart key:**

- |                                                     |                                                              |                                       |
|-----------------------------------------------------|--------------------------------------------------------------|---------------------------------------|
| ○ - rnd cord st                                     | - dc (double crochet; flo)                                   | ↗ - /inc (edc blo, dc flo) in same st |
| × - sc (in both lps)                                | ↙ ↘ - \-dc and /-dc (left-slanted and right-slanted dc; flo) | ↖ - \inc (dc blo, edc flo) in same st |
| ⊗ - FPsc (front post sc)                            | ↗ ↘ - dec (2 dc together; flo)                               | ≠ ≠ - tr (treble)                     |
| ⊙ - at the bottom of any st indicates front post st | ↘ ↘ - inc (dc blo, dc flo) in same st                        | ≠≠ - dtr (double treble)              |
| ■ - sc blo (Yarn1)                                  | ≠ ≠ - edc (extended dc; flo)                                 | ○ - CL (6 edc in same st)             |
| ■ - sc blo (Yarn2 or Yarn3)                         |                                                              | <1 - rnd # and beg                    |