

Giraffe Lapghan Blanket

crochet pattern by Natalia Kononova



Finished and photographed by Bianca Vernaleken

Skill Level

- Intermediate/ Advanced



Finished and photographed by Lauren Wolf

Acknowledgment

- **Turning design idea into a digital drawing:** Timur Galyash (Instagram: @relaxedartist).
- **Testing, creating prototypes:** thanks to volunteers in no particular order: Karin Terpstra, Lauren Wolf, Jessica Yeh, Heidi Baasch, and Bianca Vernaleken for your tremendous help!

Copyright information

- © This pattern and all images are copyrighted by and intellectual property of Natalia Kononova.
- Do not copy, share, resell, or forward this pattern to anyone. No part of this work may be reproduced, transmitted, translated or published in any form or by any means without prior written permission.
- If you bought this pattern from any other person but the designer Natalia Kononova, or downloaded it for free, please, delete file immediately. Thank you!

Size

- 100cm x 124cm/ 39 ¾" x 48 ¾"

Materials and Tools

- **DK/ #3 yarn such as:**

Scheepjes Colour Crafter (100% Premium Acrylic, 100g/ 300m/ 328.1yds)

Get from [Wool Warehouse](#)* (UK, US delivery), [LoveCrafts](#)* (UK, US), [Jimmy Beans](#) (US), [Caro's Atelier](#)* (NL)

or **Scheepjes Scrumptious** (50% Recycled Polyester (recycled plastic bottles) x 50% Acrylic, 100g/ 300m/ 328yds)

Get from [Wool Warehouse](#)* (UK, US delivery), [Caro's Atelier](#)* (NL)

- **Yarn1 (dark):** 7 skeins/ 620g/ 1860m, including 130g for double border
- **Yarn2 (light):** 6 skeins/ 550g/ 1650m, including 70g for double border
- **Yarn3 (optional; darker color for nostrils, eyes, ears, and horns):** 1 skein/ 20g/ 60m
- Crochet hook 4mm

*Affiliated links (I receive a small commission from a seller at no additional cost for you)

Abbreviations (American crochet terminology)

"	inches	dc2inc	2 dc in same st	pr	previous row
*	rep instructions for single * as directed	dc2tog	2 dc together	prev	previous
...	rep instructions bet **'s as many times as noted after	dec	decrease	rem	remain(ing)
		dtr	double treble	rep	repeat
		est	extended st	RH	right hand
		edc	extended dc	Row(s)	round(s)
[], { }	rep instructions bet []'s or { }'s as many times as noted after	flo	through front loop only	RS	right side
		FLst	st made in front loop	sc	single crochet
approx	approximately	fnd	foundation	sc2inc	2 sc in same st
beg	begin/beginning	FPst	st made in front post	sc2tog	2 sc together
				sk	skip

bet	between	g	gram(s)	ss	slip stitch
blo	through back loop only	hdc	half double crochet	sp(s)	space(s)
		inc	increase	st(s)	stitch(es)
BLst	st made in back loop	LH	left hand	tog	together
BPst	st made in back post	lp(s)	loop(s)	tr	treble crochet
ch	chain	m	marker	tr2inc	2 tr in same st
ch-# sp	chain space	mm	millimeter(s)	tr2tog	2 tr together
cm	centimeter(s)	oz	ounce	ttr	triple treble
con	connecting	p	picot	WS	wrong side
cont	continue	PU	pick up	yd(s)	yard(s)
dc	double crochet	pm	place marker	yo	yarn over

Videos

Videos are also **included in written instructions**.

Videos only **show highlights** to help you with written instructions and charts.

If a video doesn't play, try to either save it to your playlist on YouTube, add pattern to pdf reading app on your device, open file in .html format, type link into a browser, or contact for assistance:

<https://www.outstandingcrochet.com/contact>

Videos are **parts of a paid pattern** and shouldn't be shared or forwarded to anyone. Thank you!

- **Foundation cord:** <https://youtu.be/D2qUB8t4uc8>
- **Rows 1-7:** https://youtu.be/MHQ_2Rxodgw
- **Rows 8-18:** <https://youtu.be/8bLVvsxIoys>
- **Rows 34, 35 (Rows 7, 8 in video for baby size blanket; with chart explanation):**
<https://youtu.be/KjIXYPPZH1E>
- **Row 36 (Row 9 in video for baby size blanket; with chart explanation):**
<https://youtu.be/hsnbuhGKu90>
- **Optional Yarn3 (for nostrils, eyes, ears, horns):** <https://youtu.be/qWgV-Mikocg>
- **Left eye in Rows 116-119 (Rows 61-64 in video for Giraffe Bag):**
<https://youtu.be/lgPNK2PBrTo>
- **Double border:** <https://youtu.be/Cye50q8gDMY>

Rules for overlay mosaic crochet

- Overlay mosaic crochet is worked on right side (RS) only.
- Each row is made with one color. Colors are alternated in each row.
- Sc (empty blocks on charts): made in stitches from prev row through back loop only. Abbreviation *blo* (back loop only) is skipped to simplify instructions.
- Dc, dc- increases and decreases: made in stitches from corresponding color row (2nd row down) and through front loop only (flo). Abbreviation *flo* is skipped to simplify instructions.

Before starting

- Check pattern page for **corrections and updates**:
<https://www.outstandingcrochet.com/giraffe-blanket-crochet-pattern>
- For **pattern support** join [Outstanding Crochet and Friends Facebook group](#)
- To receive **discounts** on new patterns, sign up for newsletters:
www.OutstandingCrochet.com

Special stitches and abbreviations

- **Bsc (border sc at the beg of row)**: leave 8cm/ 3 ¼" tail, make slip knot, with slip knot on hook make sc in both lps of 1st sc from pr.
- **Bsc (border sc at the end of row)**: sc in both lps of last sc from pr, cut yarn leaving 8cm/ 3 ¼" tail, yo, draw tail through last lp, tighten up.
- **/-dc**: right-slanted dc in 1 st forward (make in directed or next st.
- **\-dc**: left-slanted dc in 1 stitch back (make in directed or next st.
- **dec**: decrease, 2dc together.
- **inc**: increase, 2dc in same st.
- **Behind st (slanted)**: above starting point of slanted st.
- **edc** (extended dc): insert hook in directed st, yo, draw yarn through st, yo, draw yarn through 1 lp on hook, [yo, draw yarn through 2 lps on hook]x2.
- **\-FPtr, /-FPtr**: left-slanted and right-slanted front post treble crochet.
- **Yarn1**: dark, **Yarn2**: light.

Mosaic crochet stitches:

<https://youtu.be/pev3cjonoTY>

Time marks:

00:19 sc (single crochet)

00:38 dc (double crochet)
01:16 /-dc (right-slanted dc)
02:04 sc behind prev dc
02:33 \-dc (left-slanted dc)
03:02 /-edc (right-slanted extended double crochet)
03:50 2 sts behind edc
04:38 \-edc (left-slanted extended double crochet)
05:26 dec (modified decrease; can be used instead of dc2tog)
07:02 /dec (modified right-slanted decrease; can be used instead of dc-edc-tog)
08:19 \dec (modified left-slanted decrease; can be used instead of edc-dc-tog)
09:26 inc (increase)
09:45 /inc (right-slanted increase: (edc, dc) in same st)
10:43 \inc (left-slanted increase: (dc-edc) in same st)
11:21 sc behind dec
11:50 2 sc behind /dec
12:00 inc in first of 2 sc behind /dec
13:07 2 dc behind \dec
13:26 inc in sc behind dec or \dec
14:14 dec (first leg below prev sc)
14:53 sk sc or dc (skip stitch)

Gauge

- **Overlay mosaic crochet**: 19sts x 19rows with 4mm hook = **10cm x 10cm/ 4" x 4"**.

Gauge instructions

Foundation cord video:

<https://youtu.be/D2qUB8t4uc8>

Swatch is made in turning rows to avoid breaking yarn.

Row 1 (RS): with Yarn1 or Yarn2 make 23sts of fnd cord, turn, ch1 (*doesn't count as st throughout*), 23sc, turn.

Row 2 (WS): ch1, sc in same st (in both lps; = *border sc*), 21sc flo (front lp only) in pr, sc in last st (in both lps; = *border sc*), turn.

Row 3 (RS): ch1, sc in same st (in both lps; =

border sc), 21dc flo (front lp only) in 2nd row down, sc in last st (in both lps; = *border sc*), turn.

Rows 4-20: rep Rows 2 and 3.

Measure, make sure to obtain the gauge, unravel.

Blanket Instructions

Charts for border and giraffe section are separated due their big sizes.

Hourglass border is made along with the giraffe. Narrow double border is added to hide tails after completing the blanket.

Chart 1 on p. 39 (border).

Chart 2 on p. 40 (giraffe Rows 34-112).

Chart 3 on p. 41 (giraffe Rows 112-189).

Chart 4 on p. 38 (double border).

- **Foundation cord:**

<https://youtu.be/D2qUB8t4uc8>

- **Rows 1-7:**

https://youtu.be/MHQ_2Rxodgw

Row 1: with Yarn1 make 177sts of fnd cord, turn, ch1 (doesn't count as st throughout), 177sc. Leave 8cm/ 3 ¼" tail, fasten off.

Row 2: with Yarn1 *Bsc*, 175sc blo (*all sc are blo throughout*), *Bsc*.

Row 3: with Yarn2 *Bsc*, 175sc, *Bsc*.

Row 4: with Yarn1 *Bsc*, 4dc (*all dc flo in 2nd row down/ same color row throughout*), [23sc, dc]x7, 3dc, *Bsc*.

Row 5: with Yarn2 *Bsc*, 175sc, *Bsc*.

Row 6: with Yarn1 *Bsc*, dc, [dc, sc, dc, sc, dc, 19sc]x7, [dc, sc]x2, 2dc, *Bsc*.

Row 7: with Yarn2 *Bsc*, 2sc (in dc), dc (in sc), 3sc (2nd in sc), [*]-edc (in sc below 2nd of prev 3sc), sk sc, 17sc (1st in 2nd of 19sc), sk sc and dc, /-edc (in sc bet skipped and next dc)*, 5sc (1st in skipped dc behind edc, 2nd and 4th in sc)]x6, rep bet *'s, 3sc (1st in skipped dc behind edc, 2nd in sc), dc (in sc), 2sc (in dc), *Bsc*.

Rows 8-18: <https://youtu.be/8bLVvsxIoyS>

Row 8: with Yarn1 *Bsc*, 2dc, sc (in dc), dc (in dc), sc (in sc), dc (in dc behind edc), sc (in edc), dc (in sc), [15sc, dc (in sc), sc (in edc), 3dc (1st in dc behind edc, 2nd in sc), sc, dc (in dc behind edc), sc (in edc), 17dc, sc (in edc), dc (in dc behind edc), sc, 3dc (2nd in sc, 3rd in dc behind edc), sc (in edc), dc]x3, 15sc, dc, sc (in edc), dc (in dc behind edc), sc, dc, sc, 2dc, *Bsc*.

Row 9: with Yarn2 *Bsc*, 2sc, dc, sc, dc, 3sc, [-FPtr (in edc), sk sc, 13sc (1st in 2nd of 15sc), sk sc and dc, /-FPtr (in edc), 5sc (1st in skipped dc behind tr, 2nd in sc), dc, 3sc (2nd in sc), \-FPtr (in edc), sk dc, 13sc (1st in 3rd of 17dc), sk 2dc, /-FPtr (in edc), 3sc (1st in 2nd skipped dc behind tr, 2nd in sc), dc (in sc), 5sc (4th in sc)]x3, \-FPtr (in edc), sk sc, 13sc (1st in 2nd of 15sc), sk sc and dc, /-FPtr (in edc), 3sc (1st in skipped dc behind tr, 2nd in sc), dc, sc, dc, 2sc, *Bsc*.

Row 10: with Yarn1 *Bsc*, 2dc, sc, dc, sc, 3dc (2nd in sc, 3rd in dc behind tr), [sc (in tr), dc, 11sc, dc, sc (in tr), 5dc (1st in dc behind tr, 2nd in sc), sc (in dc), dc, sc, dc (in dc behind tr), sc (in tr), 13dc, sc (in tr), dc (in dc behind tr), sc, dc, sc, 5dc (4th in sc, last in dc behind tr)]x3, sc (in tr), dc, 11sc, dc, sc (in tr), 3dc (1st in dc behind tr, 2nd in sc), sc, dc, sc, 2dc, *Bsc*.

Row 11: with Yarn2 *Bsc*, 2sc, dc, sc, dc, 5sc (4th in sc), [-FPtr (in \-FPtr throughout pattern), sk sc, 9sc (1st in 2nd of 11sc), sk sc and dc, /-FPtr (in /-FPtr throughout pattern), 7sc (1st in skipped dc behind tr, 2nd in sc), dc, sc, dc, 3sc (2nd in sc), \-FPtr, sk dc, 9sc (1st in 3rd of 13dc), sk 2dc, /FPtr, 3sc (1st in 2nd skipped dc behind tr, 2nd in sc), dc, sc, dc, 7sc (6th in sc)]x3, \-FPtr, sk sc, 9sc (1st in 2nd of 11sc), sk sc and dc, /-FPtr, 5sc (1st in skipped dc behind tr, 2nd in sc), dc, sc, dc, 2sc, *Bsc*.

Row 12: with Yarn1 *Bsc*, 2dc, sc, dc, sc, 5dc

(4th in sc, last in dc behind tr),
 [sc (in tr), dc, 7sc, dc, sc (in tr), 7dc (1st in dc behind tr, 2nd in sc),
 *sc, dc, rep from * x2 (last dc in dc behind tr),
 sc (in tr), 9dc (1st in 3rd of 13dc), sc (in tr), dc
 (in dc behind tr), sc,
 **dc, sc, rep from ** x1,
 7dc (6th in sc, last in dc behind tr)]x3,
 sc (in tr), dc, 7sc, dc, sc (in tr), 5dc (1st in dc behind tr, 2nd in sc), sc, dc, sc, 2dc, *Bsc*.

Row 13: with Yarn2 *Bsc*, 2sc, dc, sc, dc, 7sc
 (6th in sc),
 [\FPtr, sk sc, 5sc (1st in 2nd of 7sc), sk sc and
 dc, /FPtr, 9sc (1st in skipped dc behind tr, 2nd in
 sc),
 *dc, sc, rep from * x2,
 2sc (in sc and dc), \FPtr, sk dc, 5sc (1st in 3rd of
 9dc), sk 2dc, /FPtr, 2sc (1st in 2nd skipped dc
 behind tr, 2nd in sc),
 **sc, dc, rep from ** x2,
 9sc (8th in sc)]x3,
 \FPtr, sk sc, 5sc (1st in 2nd of 7sc), sk sc and dc,
 /FPtr, 7sc (1st in skipped dc behind tr, 2nd in
 sc), dc, sc, dc, 2sc, *Bsc*.

Row 14: with Yarn1 *Bsc*, 2dc, sc, dc, sc, 7dc
 (6th in sc, last in dc behind tr),
 [sc (in tr), dc, 3sc, dc, sc (in tr), 9dc (1st in dc behind tr, 2nd in sc),
 *sc, dc, rep from * x3 (last dc in dc behind tr),
 sc (in tr), 5dc (1st in 3rd of 9dc), sc (in tr),
 ** dc (1st in dc behind tr), sc, rep from ** x3,
 9dc (8th in sc, last in dc behind tr)]x3,
 sc (in tr), dc, 3sc, dc, sc (in tr), 7dc (1st in dc behind tr, 2nd in sc), sc, dc, sc, 2dc, *Bsc*.

Row 15: with Yarn2 *Bsc*, 2sc, dc, sc, dc, 9sc
 (8th in sc),
 [\FPtr, sk sc, sc (in 2nd of 3sc), sk sc and dc,
 /FPtr, 11sc (1st in skipped dc behind tr, 2nd in
 sc),
 *dc, sc, rep from * x3,
 2sc (in sc and dc), \FPtr, sk dc, sc (in 3rd of
 5dc), sk 2dc, /FPtr, 2sc (1st in skipped dc
 behind tr, 2nd in sc),
 **sc, dc, rep from ** x3,

11sc (10th in sc)]x3,
 \FPtr, sk sc, sc (in 2nd of 3sc), sk sc and dc,
 /FPtr, 9sc (1st in skipped dc behind tr, 2nd in
 sc), dc, sc, dc, 2sc, *Bsc*.

Row 16: with Yarn1 *Bsc*, 2dc, sc, dc, sc, 9dc
 (8th in sc, last in dc behind tr),
 [sc (in tr), dc, sc (in tr), 11dc (1st in dc behind
 tr, 2nd in sc),
 *sc, dc, rep from * x10 (4th and 6th dc behind tr;
 5th and 6th sc in tr),
 sc, 11dc (10th in sc, last in dc behind tr)]x3,
 sc (in tr), dc, sc (in tr), 9dc (1st in dc behind tr,
 2nd in sc), sc, dc, sc, 2dc, *Bsc*.

Row 17: with Yarn2 *Bsc*, 2sc, dc, sc, dc, 9sc (in
 dc),
 [sk sc and dc, /FPtr (in /-tr), sc (in skipped dc
 behind tr), \FPtr (in \-tr; cross prev tr), sk sc,
 11sc (in dc), *dc, sc, rep from * x4,
 sk sc and dc, /FPtr (in /-tr), sc (in skipped dc
 behind tr), \FPtr (in \-tr; cross prev tr), sk sc,
 **sc (in dc), dc (in sc), rep from ** x4,
 11sc (in dc)]x3,
 sk sc and dc, /FPtr (in /-tr), sc (in skipped dc
 behind tr), \FPtr (in \-tr; cross prev tr), sk sc,
 9sc (in dc), dc, sc, dc, 2sc, *Bsc*.

Row 18: with Yarn1 *Bsc*, 2dc, sc, dc, sc, 9dc
 (in dc),
 [sc (in tr), dc (in dc bet 2tr), sc (in tr), 11dc (in
 dc),
 *sc, dc, rep from * x4,
 sc (in tr), dc (in dc bet 2tr), sc (in tr),
 **dc, sc, rep from ** x4,
 11dc (in dc)]x3,
 sc (in tr), dc (in dc bet 2tr), sc (in tr), 9dc (in
 dc), sc, dc, sc, 2dc, *Bsc*.

Row 19: with Yarn2 *Bsc*, 2sc, dc, sc, dc, 7sc,
 sk 2dc,
 [/FPtr, 5sc (1st in 2nd skipped dc behind tr, 2nd
 and 4th in sc), \FPtr, sk dc, 9sc (1st in 3rd of
 11dc),
 *dc, sc, rep from * x3,
 sk sc and dc, /FPtr, 5sc (1st in skipped dc
 behind tr, 2nd and 4th in sc), \FPtr, sk sc,
 **sc (in dc), dc, rep from * x3,

9sc, sk 2dc]x3,
/-FPtr, 5sc (1st in 2nd skipped dc behind tr, 2nd
and 4th in sc), \-FPtr, sk dc, 7sc (1st in 3rd of
9dc), dc, sc, dc, 2sc, *Bsc*.

Row 20: with Yarn1 *Bsc*, 2dc, sc, dc, sc, 7dc,
[sc (in tr), dc (in dc behind tr), 3sc (2nd in dc),
dc (in dc behind tr), sc (in tr), 9dc (1st in 3rd of
11dc),

*sc, dc, rep from * x3,
sc (in tr), 5dc (1st and last in dc behind tr, 2nd
and 4th in sc), sc (in tr),
**dc, sc, rep from ** x3,
9dc]x3,
sc (in tr), dc (in dc behind tr), 3sc (2nd in dc), dc
(in dc behind tr), sc (in tr), 7dc (1st in 3rd of
9dc), sc, dc, sc, 2dc, *Bsc*.

Row 21: with Yarn2 *Bsc*, 2sc, dc, sc, dc, 5sc,
[sk 2dc, /-FPtr, 9sc (1st in 2nd skipped dc behind
tr; 3rd, 7th and last in dc), \-FPtr, sk dc, 7sc (1st in
3rd of 9dc),

*dc, sc, rep from * x2,
sk sc and dc, /-FPtr, 9sc (1st in skipped dc
behind tr, 2nd and 8th in sc), \-FPtr, sk sc,
**sc (in dc), dc, rep from ** x2,
7sc]x3,
sk 2dc, /-FPtr, 9sc (1st in 2nd skipped dc behind
tr; 3rd, 7th and last in dc), \-FPtr, sk dc, 5sc (1st in
3rd of 7dc), dc, sc, dc, 2sc, *Bsc*.

Row 22: with Yarn1 *Bsc*, 2dc, sc, dc, sc, 5dc,
[sc (in tr), dc (in dc behind tr), 7sc, dc (in dc
behind tr), sc (in tr), 7dc (1st in 3rd of 9dc),

*sc, dc, rep from * x2,
sc (in tr), 9dc (1st and last in dc behind tr; 2nd
and 8th in sc), sc (in tr),
**dc, sc, rep from ** x2, 7dc]x3,
sc (in tr), dc (in dc behind tr), 7sc, dc (in dc
behind tr), sc (in tr), 5dc (1st in 3rd of 7dc), sc,
dc, sc, 2dc, *Bsc*.

Row 23: with Yarn2 *Bsc*, 2sc, dc, sc, dc, 3sc,
[sk 2dc, /-FPtr, 13sc (1st in dc behind tr; 3rd, 11th
and last in dc), \-FPtr, sk dc, 5sc (1st in 3rd of
7dc),

*dc, sc, rep from * x1,
sk sc and dc, /-FPtr, 13sc (1st in skipped dc

behind tr, 2nd and 12th in sc), \-FPtr, sk sc,
**sc (in dc), dc, rep from ** x1,

5sc]x3,
sk 2dc, /-FPtr, 13sc (1st in skipped dc behind tr;
3rd, 11th, and last in dc), \-FPtr, sk dc, 3sc (1st in
3rd of 5dc), dc, sc, dc, 2sc, *Bsc*.

Row 24: with Yarn1 *Bsc*, 2dc, sc, dc, sc, 3dc,
[sc (in tr), dc (in dc behind tr), 11sc, dc (in dc
behind tr), sc (in tr), 5dc (1st in 3rd of 7dc),

*sc, dc, rep from * x1,
sc (in tr), 13dc (1st and last in dc behind tr; 2nd
and 12th in sc), sc (in tr),

**dc, sc, rep from ** x1,
5dc]x3,
sc (in tr), dc (in dc behind tr), 11sc, dc (in dc
behind tr), sc (in tr), 3dc (1st in 3rd of 5dc), sc,
dc, sc, 2dc, *Bsc*.

Row 25: with Yarn2 *Bsc*, 2sc, dc, sc, dc, sc,
[sk 2dc, /-FPtr, 17sc (1st in dc behind tr; 3rd, 15th
and last in dc), \-FPtr, sk dc, 3sc (1st in 3rd of
5dc), dc, sc, sk sc and dc, /-FPtr, 17sc (1st in dc
behind tr, 2nd and 16th in sc), \-FPtr, sk sc, sc (in
dc), dc, 3sc]x3,

sk 2dc, /-FPtr, 17sc (1st in dc behind tr; 3rd, 15th,
and last in dc), \-FPtr,
sk dc, sc (in last of 3dc), dc, sc, dc, 2sc, *Bsc*.

Row 26: with Yarn1 *Bsc*, 2dc, sc, dc, sc, dc,
[sc (in tr), dc (in dc behind tr), 15sc, dc (in dc
behind tr), sc (in tr), 3dc (1st in 3rd of 5dc), sc,
dc, sc (in tr), 17dc (1st and last in dc behind tr,
2nd and 16th in sc), sc (in tr), dc, sc, 3dc]x3,
sc (in tr), dc (in dc behind tr), 15sc, dc (in dc
behind tr), sc (in tr), dc (in last of 3dc), sc, dc,
sc, 2dc, *Bsc*.

Row 27: with Yarn2 *Bsc*, 2sc, dc, sc,
[sk sc and dc, /-FPtr, 21sc (1st in skipped dc
behind tr; 3rd, 19th, and last in dc), \-FPtr, sk dc,
sc (in last of 3dc), sk sc and dc, /-FPtr, 21sc (1st
in skipped dc behind tr, 2nd and 20th in sc),
\-FPtr, sk sc, sc (in 1st of 3dc)]x3,

sk 2dc, /-FPtr, 21sc (1st in skipped dc behind tr;
3rd, 19th, and last in dc), \-FPtr, sk sc, sc (in dc),
dc, 2sc, *Bsc*.

Row 28: with Yarn1 *Bsc*, 2dc, sc, dc,

[sc (in tr), dc (in dc behind tr), 19sc, dc (in dc behind tr), sc (in tr), dc (in dc)]x7, sc, 2dc, *Bsc*.

Row 29: with Yarn2 *Bsc*, 175sc, *Bsc*.

Row 30: with Yarn1 *Bsc*, 2dc, sc, *dc, sc, 21dc (1st and last in dc), sc, dc **, [23sc, dc]x4, 23sc, rep from * to **, sc, 2dc, *Bsc*.

Row 31: with Yarn2 *Bsc*, 2sc, *dc, 3sc (2nd in sc), \-edc (in sc below 2nd of prev 3sc), sk dc, 17sc (1st in 3rd of 21dc), sk 2dc, \-edc (in sc bet 21dc and dc), 3sc (1st in 2nd of skipped dc behind edc, 2nd in sc), dc, **, 117sc, rep from * to **, 2sc, *Bsc*.

Row 32: with Yarn1 *Bsc*, 2dc, *sc, dc, sc, dc (in dc behind edc), sc (in edc), 17dc (1st in 3rd of 21dc), sc (in edc), dc (in dc behind edc), sc, dc, sc (in dc) **, dc (in sc), [3sc, dc]x29, rep from * to **, 2dc, *Bsc*.

Row 33: with Yarn2 *Bsc*, 2sc, *dc, sc, dc, 3sc (2nd in sc), \-FPtr (in edc), sk dc, 13sc (1st in 3rd of 17dc), sk 2dc, \-FPtr (in edc), 3sc (1st in 2nd skipped dc behind tr, 2nd in sc), dc, sc, dc **, [sc (in dc), dc, sc, dc]x29, sc (in dc), rep from * to **, 2sc, *Bsc*.

- **Rows 34, 35 (Rows 7, 8 in video for baby size blanket; with chart explanation):**
<https://youtu.be/KjIXYPPZH1E>

Row 34: with Yarn1 *Bsc*, 2dc, *[sc, dc]x2, sc, dc (in dc behind tr), sc (in tr), 13dc (1st in 3rd of 17dc), sc (in tr), dc (in dc behind tr), [sc, dc]x2, sc, **, [dc, 3sc]x29, dc, rep from * to **, 2dc, *Bsc*.

Note:

- Keep following **Chart 1** for border before and after giraffe section.
- **Follow Chart 2** on p. 40 for giraffe section.

Row 35: with Yarn2

border: *Bsc*, 2sc,

*[dc, sc]x2, dc, 3sc (2nd in sc), \-FPtr, sk dc, 9sc

(1st in 3rd of 13dc), sk 2dc, \-FPtr, 3sc (1st in 2nd skipped dc behind tr, 2nd in sc), [dc, sc]x2, dc **,

5sc (1st and last in dc), **pm1** (*bet sts; move up in every row to divide border and giraffe sections*),

giraffe: 107sc, **pm2** (*bet sts; move up in every row to divide giraffe and border sections*),

border: 5sc (1st and last in dc), rep from * to **, 2sc, *Bsc*.

- **Row 36 (Row 9 in video for baby size blanket; with chart explanation):**

<https://youtu.be/hsnbuhGKu90>

Row 36: with Yarn1

border: *Bsc*, 2dc,

*[sc, dc]x4 (last dc in dc behind tr), sc (in tr), 9dc (1st in 3rd of 13dc), sc (in tr), dc (in dc behind tr), [sc, dc]x3, sc **, dc, 3sc, dc,

giraffe: 23dc, dec, 16sc (1st behind prev dec), sk sc, inc, 9dc, inc, sk sc, 7sc, sk sc, inc, 18dc, inc, sk sc, 5sc, dec (1st leg below prev sc), 15dc, dec, 3sc (1st behind dec),

border: dc, 3sc, dc, rep from * to **, 2dc, *Bsc*.

Row 37: with Yarn2

border: *Bsc*, 2sc,

*[dc, sc]x4, 2sc (in sc and dc), \-FPtr, sk dc, 5sc (1st in 3rd of 9dc), sk 2dc, \-FPtr, 2sc (in skipped dc behind tr and sc), [sc, dc]x4 **, [sc, dc]x2, sc,

giraffe: 23sc, sk dec, inc (behind dec), 14dc, dec, 13sc (first 2 and last 2 in inc), dec (1st leg below prev sc), 5dc, dec, 22sc (first 2 and last 2 in inc), dec (1st leg below prev sc), 3dc, inc, sk dec, 15sc, sk dec, inc (behind dec), 2dc,

border: sc, [dc, sc]x2, rep from * to **, 2sc, *Bsc*.

Row 38: with Yarn1

border: *Bsc*, 2dc,

*[sc, dc]x5 (last in dc behind tr), sc (in tr), 5dc (1st in 3rd of 9dc), sc (in tr), [dc (1st in dc behind tr), sc]x5 **, dc, 3sc, dc,

giraffe: 20dc, dec, 19sc (first 2 in sc, last in dec), 13dc, 6sc (1st in dec), sk dec, inc, 20dc, inc, sk dec, 6sc (last in sc), dec (1st leg below prev sc), 12dc, dec (2nd leg in dec), 4sc,
border: dc, 3sc, dc, rep from * to **, 2dc, *Bsc*.

Row 39: with Yarn2

border: *Bsc*, 2sc,
*[dc, sc]x5, 2sc (in sc and dc), \-FPtr, sk dc, sc (in 3rd of 5dc), sk 2dc, \-FPtr, 2sc (in skipped dc behind tr and sc), [sc, dc]x5 **,

5sc,

giraffe: 20sc, sk dec, inc (in 1st of 2sc), 2dc (in sc and dc), dec, 11sc (1st behind dec), dec (1st leg below prev sc), 2dc, inc (in dec), sk dc, 12sc, 5dc (1st in dec), dec (2nd leg in dec), 25sc (last in sc), dec (1st leg in dc below prev sc), 3dc, inc (in sc), sk dec, 12sc, sk dec, inc (in 1st dc of inc), 3dc,

border: 5sc, rep from * to **, 2sc, *Bsc*.

Row 40: with Yarn1

border: *Bsc*, 2dc,

*[sc, dc]x6 (last in dc behind tr), sc (in tr), dc (in dc bet 2tr), sc (in tr), [dc (1st in dc behind tr), sc]x6 **,
dc, 3sc, dc,

giraffe: 18dc, dec, 5sc (1st in sc), sk dec, inc (behind skipped dec), 9dc, inc, sk dec, 4sc, dec (in first 2dc), 11dc, 5sc, sk dec, inc, 23dc, inc (in sc), sk dec, 6sc (last in sc), dec (1st leg in dc below prev sc), 9dc, dec (2nd leg in dec), 5sc,

border: dc, 3sc, dc, rep from * to **, 2dc, *Bsc*.

Row 41: with Yarn2

border: *Bsc*, 2sc,

*[dc, sc]x6, sk sc and dc, \-FPtr (in \-tr), sc (in skipped dc behind tr), \-FPtr (in \-tr; cross prev tr), sk sc, [sc (in dc), dc]x6 **,
[sc, dc]x2, sc,

giraffe: 18sc, sk dec, inc (in sc), 2dc, dec, 15sc (1st and last in sc), dec (1st leg in dc below prev sc), dc (in 1st dc of inc), inc (in 2nd dc of inc), sk dec, 11sc, 4dc, dec (2nd leg in dec), 28sc (last in sc), dec (1st leg in dc below prev sc), 3dc, inc (in sc), sk dec, 9sc, sk dec, inc, 4dc,

border: [sc, dc]x2, sc, rep from * to **, 2sc, *Bsc*.

Row 42: with Yarn1

border: *Bsc*, 2dc,

*[sc, dc]x6, sc (in tr), dc (in dc bet 2tr), sc (in tr), [dc, sc]x6 **,
dc, 3sc, dc,

giraffe: 16dc, dec, 5sc (1st in sc), sk dec, inc (in sc), 13dc, inc (in sc), sk dec, 3sc, dec (1st leg in dec), 9dc, inc, sk dc, 4sc (last in dec), 27dc, inc (in sc), sk dec, 7sc (last 2 in sc), dec (1st leg below prev sc), 4dc, dec, 7sc (1st in sc),

border: dc, 3sc, dc, rep from * to **, 2dc, *Bsc*.

Row 43: with Yarn2

border: *Bsc*, 2sc,

*[dc, sc]x5, sk sc and dc, \-FPtr, 5sc (1st in skipped dc behind tr, 2nd and 4th in sc), \-FPtr, sk sc, [sc (in dc), dc]x5 **,
5sc,

giraffe: 16sc, sk dec, inc (in sc), 2dc, dec, 18sc (1st in sc), dec (1st leg in dec), dc, inc, sk dec, 11sc, dec (in first 2dc), 3dc (last in dec), 30sc (last in sc), dec (1st leg in dc below prev sc), 4dc (last in sc), inc, sk dec, 4sc, sk dec, inc (in sc), 4dc, dec, sc (behind prev dec),

border: 5sc, rep from * to **, 2sc, *Bsc*.

Row 44: with Yarn1

border: *Bsc*, 2dc,

*[sc, dc]x5, sc (in tr), 5dc (1st and last in dc behind tr, 2nd and 4th in sc), sc (in tr), [dc, sc]x5 **,
dc, 3sc, dc,

giraffe: dec, 8sc (1st behind dec), dec (1st leg below prev sc), 4dc, dec, 5sc (1st in sc), sk dec, inc (in sc), 16dc, inc, sk dec, 3sc, dec (1st leg in dec), 9dc, inc, sk dec, 3sc, 29dc, inc (in sc), sk dec, 16sc (7th-10th in sc), sk dec, inc (in sc),

border: dc, 3sc, dc, rep from * to **, 2dc, *Bsc*.

Row 45: with Yarn2

border: *Bsc*, 2sc,

*[dc, sc]x4, sk sc and dc, \-FPtr, 9sc (1st in skipped dc behind tr, 2nd and 8th in sc), \-FPtr, sk sc, [sc (in dc), dc]x4 **,

[sc, dc]x2, sc,
giraffe: sk dec, inc (in sc behind skipped dec),
6dc, inc, sk dec, 4sc, sk dec, inc (in sc), 2dc,
dec, 21sc (1st in sc), dec (1st leg in dec), 2dc,
12sc (1st in dec), dec (1st leg in dec), dc, inc, sk
dc, 31sc (last in sc), dec (1st leg in dc below
prev sc), 12 dc (5th-8th in sc), dec, 3sc (1st in sc),
border: [sc, dc]x2, sc, rep from * to **, 2sc,
Bsc.

Row 46: with Yarn1

border: *Bsc*, 2dc,
*[sc, dc]x4, sc (in tr), 9dc (1st and last in dc
behind tr, 2nd and 8th in sc), sc (in tr), [dc, sc]x4
**,
dc, 3sc, dc,
giraffe: 18sc, sk dec, inc (in sc), 20dc, 3sc (1st
in dec), 11dc, inc, sk dec, 3sc, dec (in first 2dc,
29dc, inc (in sc), sk dec, 12sc, sk dec, inc (in
sc), 2dc,
border: dc, 3sc, dc, rep from * to **, 2dc, *Bsc*.

Row 47: with Yarn2

border: *Bsc*, 2sc,
*[dc, sc]x3, sk sc and dc, /-FPtr, 13sc (1st in
skipped dc behind tr, 2nd and 12th in sc), \-FPtr,
sk sc, [sc (in dc), dc]x3 **,
5sc,
giraffe: dc, dec, 8sc (1st behind dec), dec (in dc
and sc), 6dc (first 3 in sc), dec (2nd leg in dec),
22sc, 3dc (1st in dec), 13sc, dec (1st leg in dec),
dc, inc, sk dec, 32sc (last in sc), dec (1st leg in
dc below prev sc), 9dc, dec (2nd leg in dec),
4sc,
border: 5sc, rep from * to **, 2sc, *Bsc*.

Row 48: with Yarn1

border: *Bsc*, 2dc,
*[sc, dc]x3, sc (in tr), 13dc (1st and last in dc
behind tr, 2nd and 12th in sc), sc (in tr), [dc,
sc]x3 **,
dc, 3sc, dc,
giraffe: sc, sk dec, inc (behind skipped dec),
6dc, inc, sk dec, 7sc (last in dec), 22dc, 3sc,
13dc, 5sc (1st in dec, last in sc), dec (1st leg in
dc below prev sc), 29dc, inc (in sc), sk dec,

14sc (10th in dec, last 4 in sc),
border: dc, 3sc, dc, rep from * to **, 2dc, *Bsc*.

Row 49: with Yarn2

border: *Bsc*, 2sc,
*[dc, sc]x2, sk sc and dc, /-FPtr, 17sc (1st in
skipped dc behind tr, 2nd and 16th in sc), \-FPtr,
sk sc, [sc (in dc), dc]x2 **,
[sc, dc]x2, sc,
giraffe: dec (2nd leg in dec), 11sc (last in sc),
dec (1st leg in dc below prev sc), 5dc (last in
dec), 22sc, 3dc, 13sc, 4dc (1st in dec), inc (in
sc), sk dec, 32sc (last in sc), dec (1st leg in dc
below prev sc), 5dc, dec, 4sc (1st behind prev
dec), dec (1st leg below prev sc), dc,
border: [sc, dc]x2, sc, rep from * to **, 2sc,
Bsc.

Row 50: with Yarn1

border: *Bsc*, 2dc,
*[sc, dc]x2, sc (in tr), 17dc (1st and last in dc
behind tr, 2nd and 16th in sc), sc (in tr), [dc,
sc]x2 **,
dc, 3sc, dc,
giraffe: sk dec, inc, 9dc, inc (in sc), sk dec, 5sc,
22dc, 3sc, 13dc, 8sc (last 2 in sc), dec (1st leg
below prev sc), 28dc, inc (in sc), sk dec, 5sc, sk
dec, inc (in sc behind skipped dec), 2dc, inc, sk
dec, sc,
border: dc, 3sc, dc, rep from * to **, 2dc, *Bsc*.

Row 51: with Yarn2

border: *Bsc*, 2sc,
*dc, sc, sk sc and dc, /-FPtr, 21sc (1st in skipped
dc behind tr, 2nd and 20th in sc), \-FPtr, sk sc, sc
(in dc), dc **,
5sc,

giraffe: 13sc, dec (1st leg in dec), 3dc, inc, sk
dc, 21sc, 2dc, inc, sk dc, 11sc, sk dc, inc, 6dc
(last in sc), inc, sk dec, 30sc, dec (1st leg in
dec), 2dc, dec, 7sc (1st in sc), dec (1st leg in
dec),

border: 5sc, rep from * to **, 2sc, *Bsc*.

Row 52: with Yarn1

border: *Bsc*, 2dc,
*sc, dc, sc (in tr), 21dc (1st and last in dc behind

tr, 2nd and 20th in sc), sc (in tr), dc, sc **,
dc, 3sc, dc,
giraffe: 12dc, inc, sk dec, 5sc, dec (in first 2dc),
20dc, 4sc, dec (in first 2dc), 9dc, dec, 12sc (last
2 in sc), dec (1st leg below prev sc), 27dc, 3sc
(1st in dec), sk dec, inc (in sc), 5dc, inc, sk dec,
border: dc, 3sc, dc, rep from * to **, 2dc, *Bsc*.

Row 53: with Yarn2

border: *Bsc*, 30sc, [dc, sc]x2,

giraffe: 14sc, dec (1st leg in dec), 3dc, inc, sk
dec, 20sc, 3dc, inc, sk dec, 9sc, sk dec, inc,
3dc, dec, 4sc (1st behind prev dec), 4\dc (in inc
and 2sc), sk dec, 27sc, 2dc (1st in dec), dec (2nd
leg in dec), 9sc,

border: [sc, dc]x2, 30sc, *Bsc*.

Row 54: with Yarn1

border: *Bsc*, 2dc,

*[sc, dc]x2, 19sc, [dc, sc]x2, **,
dc, 3sc, dc,

giraffe: 13dc, inc, sk dec, 5sc, dec (1st leg in
dec), 19dc, 5sc, dec (1st leg in dec), 6dc, dec,
6sc (1st in sc), sk dec, inc (in 1st of 4sc), 2dc,
inc, sk dc, 5sc (last 2 in sc), dec (1st leg below
prev sc), 24dc, 2sc, sk dec, inc, 8dc,

border: dc, 3sc, dc, rep from * to **, 2dc, *Bsc*.

Row 55: with Yarn2

border: *Bsc*, 2sc,

*dc, 3sc (2nd in sc), \-edc (in sc below 2nd of
prev 3sc), sk sc, 17sc (1st in 2nd of 19sc), sk sc
and dc, /-edc (in sc bet 2dc), 3sc (1st in skipped
dc behind edc, 2nd in sc), dc **,
5sc,

giraffe: 15sc, dec (1st leg in dec), 3dc, inc, sk
dec, 19sc, 4dc, inc, sk dec, 6sc, sk dec, inc (in
sc), 3dc, dec, 9sc (1st and last 2 in sc), 4\dc (in
2dc and 2sc), sk dec, 23sc, sk dc, 3/-dc (in 2dc
and dec), 10sc (first 2 in inc),

border: 5sc, rep from * to **, 2sc, *Bsc*.

Row 56: with Yarn1

border: *Bsc*, 2dc,

*[sc, dc]x2, sc (in \-edc), dc, 15sc, dc, sc (in
/-edc), [dc, sc]x2**,

dc, 3sc, dc,

giraffe: sc, dec (1st leg below prev sc), 12dc,
inc, sk dec, 5sc, dec (1st leg in dec), 18dc, 6sc,
dec (1st leg in dec), 3dc, dec, 6sc (1st in sc), sk
dec, inc (in sc), 7dc (last in sc), inc, sk dc, 4sc
(last in sc), dec (1st leg in dc below prev sc),
20dc, dec, 2sc, sk dc, inc, 9dc,

border: dc, 3sc, dc, rep from * to **, 2dc, *Bsc*.

Row 57: with Yarn2

border: *Bsc*, 2sc,

*dc, sc, dc, 3sc (2nd in sc), \-FPtr (in edc), sk sc,
13sc (1st in 2nd of 15sc), sk sc and dc, /-FPtr (in
edc), 3sc (1st in skipped dc behind tr), dc, sc,
dc**,

[sc, dc]x2, sc,

giraffe: inc (in sc), sk dec, 14sc, dec (1st leg in
dec), 4dc, 19sc (1st in dec), 5dc, inc, sk dec,
3sc, sk dec, inc (in sc), 3dc, dec, 14sc (1st and
last 2 in sc), 3\dc (in 2dc and sc), sk dec, 20sc,
sk dec, 3/-dc (in 3dc), 11sc,

border: [sc, dc]x2, sc, rep from * to **, 2sc,
Bsc.

Row 58: with Yarn1

border: *Bsc*, 2dc,

*[sc, dc]x2, 2dc (2nd in dc behind tr), sc (in tr),
dc, 11sc, dc, sc (in tr), 2dc (1st in dc behind tr,
2nd in sc), [dc, sc]x2, **,
dc, 3sc, dc,

giraffe: 3sc, dec (1st leg in dc below prev sc),
11dc, inc, sk dec, 4sc, 19dc (1st in dec), 15sc
(8-10 in sc), sk dec, inc (in sc), 12dc (last in
sc), inc, sk dc, 2sc, dec (1st leg in dec), 18dc,
dec (2nd leg in dec), 2sc, sk dc, inc, 8dc, dec, sc
(behind prev dec),

border: dc, 3sc, dc, rep from * to **, 2dc, *Bsc*.

Row 59: with Yarn2

border: *Bsc*, 2sc,

*dc, sc, dc, 5sc (4th in sc), \-FPtr, sk sc, 9sc (1st
in 2nd of 11sc), sk sc and dc, /-FPtr, 5sc (1st in
skipped dc behind tr, 2nd in sc), dc, sc, dc**,
5sc,

giraffe: 2dc, inc (in sc), sk dec, 13sc, dec (1st
leg in dec), 2dc, inc, sk dc, 17sc, sk dc, inc,

14dc (7-9 in sc), 16sc, 3\dc (in 3dc), sk dec, 18sc, sk dec, 3/-dc (in 3dc), 10sc (first 2 in inc), sk dec, inc (behind skipped dec),
border: 5sc, rep from * to **, 2sc, *Bsc*.

Row 60: with Yarn1

border: *Bsc*, 2dc,

*sc, dc, sc, 5dc (4th in sc, last in dc behind tr), sc (in tr), dc, 7sc, dc, sc (in tr), 5dc (1st in dc behind tr, 2nd in sc), sc, dc, sc**,
dc, 3sc, dc,

giraffe: 5sc (last in sc), dec (1st leg in dc below prev sc), 10dc, inc, sk dec, 4sc, dec (in first 2dc), 15dc, dec, 16sc, 15dc, inc, sk dc, 2sc, dec (1st leg in dec), 15dc, dec, 3sc (1st in sc), sk dc, inc (in 1st dc of inc), 4dc, dec, 2sc (1st behind prev dec), dec (1st leg below prev sc), dec (2nd leg in dec), 2sc,

border: dc, 3sc, dc, rep from * to **, 2dc, *Bsc*.

Row 61: with Yarn2

border: *Bsc*, 2sc,

*dc, sc, dc, 7sc (6th in sc), \FPtr, sk sc, 5sc (1st in 2nd of 7sc), sk sc and dc, /FPtr, 7sc (1st in skipped dc behind tr, 2nd in sc), dc, sc, dc**,
[sc, dc]x2, sc,

giraffe: 2sc, dec (1st leg below prev sc), dc, inc (in sc), sk dec, 12sc, dec (1st leg in dec), 2dc, inc, sk dec, 15sc, sk dec, inc, 14dc, inc, sk dc, 16sc, 3\dc, sk dec, 15sc, sk dec, 3/-dc (in sc and 2dc), 7sc (1st in sc), sk dec, inc (in 1st of 2sc), dc, sc (in dec), sk dec, inc (in 1st dc of inc), dc,

border: [sc, dc]x2, sc, rep from * to **, 2sc, *Bsc*.

Row 62: with Yarn1

border: *Bsc*, 2dc,

*sc, dc, sc, 7dc (6th in sc, last in dc behind tr), sc (in tr), dc, 3sc, dc, sc (in tr), 7dc (1st in dc behind tr, 2nd in sc), sc, dc, sc**,
dc, 3sc, dc,

giraffe: dc, inc, sk dec, 4sc (last in sc), dec (1st leg in dc below prev sc), 10dc, 5sc (1st in dec), dec (1st leg in dec), 11dc, dec, 22sc (first 2 and last 2 in sc), dec (1st leg below prev sc), 13dc,

3sc (in 3dc), dec (1st leg in dec), 13dc, dec (2nd leg in dec), 2sc (in first 2 of 3dc), sk dc, inc (in sc), 5dc, dec (2nd leg in dec), 7sc (4th in sc),

border: dc, 3sc, dc, rep from * to **, 2dc, *Bsc*.

Row 63: with Yarn2

border: *Bsc*, 2sc,

*dc, sc, dc, 9sc (8th in sc), \FPtr, sk sc, sc (in 2nd of 3sc), sk sc and dc, /FPtr, 9sc (1st in skipped dc behind tr, 2nd in sc), dc, sc, dc**,
5sc,

giraffe: 4sc (last in sc), dec (1st leg in dc below prev sc), dc, inc (in sc), sk dec, 10sc, 5dc (1st in dec), 12sc (1st in dec), sk dec, inc (in 1st of 2sc), 3dc (1st in sc), dec, 11sc (1st behind prev dec), dec (1st leg below prev sc), 4dc, inc, sk dec, 12sc, sk dc, inc (in 1st of 3dc), dc, inc, sk dec, 13sc, sk dec, 3/-dc (in 3dc), 7sc (first 2 in inc), sk dec, inc, 4dc (3rd in sc), dec, sc (behind prev dec),

border: 5sc, rep from * to **, 2sc, *Bsc*.

Row 64: with Yarn1

border: *Bsc*, 2dc,

*sc, dc, sc, 9dc (8th in sc, last in dc behind tr), sc (in tr), dc (in sc bet 2tr), sc (in tr), 9dc (1st in dc behind tr, 2nd in sc), sc, dc, sc**,
dc, 3sc, dc,

giraffe: 3dc, inc (in sc), sk dec, 4sc (last in sc), dec (1st leg in dc below prev sc), 7dc, inc, sk dc, 3sc, sk dc, inc (in dec), 9dc, dec, 6sc (1st in sc), sk dec, inc (behind skipped dec), 9dc, inc, sk dec, 7sc (last in sc), dec (1st leg in dc below prev sc), 9dc, dec, 5sc, dec (1st leg in dec), 10dc, dec, 3sc (1st in sc), sk dc, inc, 5dc, dec (2nd leg in dec), 6sc, sk dec, inc (behind skipped dec),

border: dc, 3sc, dc, rep from * to **, 2dc, *Bsc*.

Row 65: with Yarn2

border: *Bsc*, 2sc,

*dc, sc, dc, 9sc (in dc), sk sc and dc, /FPtr (in /-tr), sc (in skipped dc behind tr), \FPtr (in \-tr; cross prev tr), sk sc, 9sc (in dc), dc, sc, dc**,
[sc, dc]x2, sc,

giraffe: 6sc (last in sc), dec (1st leg in dc below prev sc), dc, inc (in sc), sk dec, 9sc, dec (in first 2dc), dc, dec, 11sc (first 2 in inc), sk dec, inc (in sc), 3dc, dec, 16sc (1st and last 2 in sc), dec (1st leg in dc below prev sc), 3dc, inc (in sc), sk dec, 9sc, sk dec, inc, 3dc, inc, sk dec, 10sc, sk dec, 3/-dc (1st in sc), 8sc (1st in sc), sk dec, inc, dc, dec, 5sc (first 3 in sc),

border: [sc, dc]x2, sc, rep from * to **, 2sc, *Bsc*.

Row 66: with Yarn1

border: *Bsc*, 2dc,

*sc, dc, sc, 9dc, sc (in tr), dc (in dc bet 2tr), sc (in tr), 9dc, sc, dc, sc**,
dc, 3sc, dc,

giraffe: 5dc, inc (in sc), sk dec, 3sc, dec (1st leg in dec), 8dc, 3sc (1st and last in dec), 10dc, dec (2nd leg in dec), 5sc, sk dec, inc (in sc), 14dc (last in sc), inc (in sc), sk dec, 6sc (last in sc), dec (1st leg in dc below prev sc), 5dc, dec, 8sc (1st in sc), dec (1st leg in dec), 3dc, dec, 7sc (1st behind prev dec; last 2 in dc), sk dc, inc (in sc), 6dc, dec (2nd leg in dec), 3sc, sk dec, inc (in 1st of 3sc), 4dc (in 2sc and inc),

border: dc, 3sc, dc, rep from * to **, 2dc, *Bsc*.

Row 67: with Yarn2

border: *Bsc*, 2sc,

*dc, sc, dc, 7sc, sk 2dc, /-FPtr, 5sc (1st in 2nd skipped dc behind tr, 2nd and 4th in sc), \-FPtr, sk dc, 7sc (1st in 3rd of 9dc), dc, sc, dc**,
5sc,

giraffe: 7sc, dec (1st leg in dec), dc, inc, sk dec, 8sc, 2dc (1st in dec), inc (in dec), sk dc, 9sc, sk dec, inc, 2dc, dec, 19sc (1st in sc), dec (1st leg in dec), 4dc, inc (in sc), sk dec, 5sc, sk dec, inc (in sc), 6dc, inc, sk dec, 3sc, sk dec, inc (in 1st of 5sc), 5dc (last in dc), dec, 8sc, sk dec, inc, dc, dec (2nd leg in dec), 6sc,

border: 5sc, rep from * to **, 2sc, *Bsc*.

Row 68: with Yarn1

border: *Bsc*, 2dc,

*sc, dc, sc, 7dc, sc (in tr), dc (in dc behind tr), 3sc, dc (in dc behind tr), sc (in tr), 7dc (1st in 3rd

of 9dc), sc, dc, sc**,
dc, 3sc, dc,

giraffe: 7dc, 4sc (1st in dec), dec (1st leg in dec), 7dc, 17sc (first 4 and last 4 in dc), sk dec, inc (in sc), 17dc, inc, sk dec, 6sc, dec (1st leg in dec), dc, dec, 22sc (first 2 and 13-15 in sc), sk dec, inc, 5dc, dec, 4sc (1st in sc), sk dec, inc, 5dc,

border: dc, 3sc, dc, rep from * to **, 2dc, *Bsc*.

Row 69: with Yarn2

border: *Bsc*, 2sc,

*dc, sc, dc, 5sc, sk 2dc, /-FPtr, 9sc (1st in 2nd skipped dc behind tr), \-FPtr, sk dc, 5sc (1st in 3rd of 7dc), dc, sc, dc**,
[sc, dc]x2, sc,

giraffe: 6sc, sk dc, inc (in dec), 2dc, inc, sk dec, 7sc, 16dc (first 4 and last 3 in dc), dec (2nd leg in dec), 21sc, dec (1st leg in dec), 4dc, inc, sk dec, sc, sk dec, inc (in 1st of 2sc), 20dc (1st and 12-14 in sc), inc, sk 1st dc of inc, 6sc, sk dec, inc (in sc), 2dc, dec (2nd leg in dec), 7sc,

border: [sc, dc]x2, sc, rep from * to **, 2sc, *Bsc*.

Row 70: with Yarn1

border: *Bsc*, 2dc,

*sc, dc, sc, 5dc, sc (in tr), dc (in dc behind tr), 7sc, dc (in dc behind tr), sc (in tr), 5dc (1st in 3rd of 7dc), sc, dc, sc**,
dc, 3sc, dc,

giraffe: 12sc, dec (1st leg in dec), 6dc, 17sc (last in dec), 20dc, inc, sk dec, 32sc (7th and last in sc), dec (1st leg in 2nd dc of inc), 2dc, dec, 5sc (1st in sc), sk dec, inc, 6dc,

border: dc, 3sc, dc, rep from * to **, 2dc, *Bsc*.

Row 71: with Yarn2

border: *Bsc*, 2sc,

*dc, sc, dc, 3sc, sk 2dc, /-FPtr, 13sc (1st in 2nd skipped dc behind tr), \-FPtr, sk dc, 3sc (1st in 3rd of 5dc), dc, sc, dc**,
5sc,

giraffe: 11dc, inc, sk dec, 5sc, sk dc, 3/-dc, 6sc (1st behind prev dc), dec (1st leg below prev sc), 8dc (last in dec), 22sc, dec (1st leg in dec), 21dc

(6th in sc), dec, 3sc (1st behind prev dec), dec (1st leg below prev sc), 4dc, inc (in sc), sk dec, 2sc, sk dec, inc (in sc), 3dc, dec (2nd leg in dec), 8sc,

border: 5sc, rep from * to **, 2sc, Bsc.

Row 72: with Yarn1

border: Bsc, 2dc,

*sc, dc, sc, 3dc, sc (in tr), dc (in dc behind tr), 11sc, dc (in dc behind tr), sc (in tr), 3dc (1st in 3rd of 5dc), sc, dc, sc**, dc, 3sc, dc,

giraffe: 20sc (14-18 in sc), sk dc, inc, 4dc, inc, sk dec, 8sc, 22dc, 22sc (1st in dec), sk dec, inc, dc, inc, sk dec, 6sc, dec (1st leg in dec), dec (2nd leg in dec), 5sc, sk dec, inc, 7dc,

border: dc, 3sc, dc, rep from * to **, 2dc, Bsc.

Row 73: with Yarn2

border: Bsc, 2sc,

*[dc, sc]x2, sk 2dc, /-FPtr, 17sc (1st in 2nd skipped dc behind tr, 3rd, 5th and last in dc), \-FPtr, sk dc, [sc (in dc), dc]x2**, [sc, dc]x2, sc,

giraffe: 8sc, dec (1st leg below prev sc), 8dc (5-8 in sc), dec (in sc and dc), 11sc (first 2 and last in sc), dec (1st leg in dc below prev sc), 6dc, 22sc, 20dc (1st in dec), dec, 6sc (1st in sc), dec (1st leg in dec), 5dc, sc (in dec), sk dec, inc, 3dc, dec (2nd leg in dec), 9sc,

border: [sc, dc]x2, sc, rep from * to **, 2sc, Bsc.

Row 74: with Yarn1

border: Bsc, 2dc,

*[sc, dc]x2, sc (in tr), dc (in dc behind tr), 15sc, dc (in dc behind tr), sc (in tr), [dc, sc]x2**, dc, 3sc, dc,

giraffe: 7dc, inc, sk dec, 8sc, sk dec, inc (in 1st of 2sc), 9dc (1st in sc), inc (in sc), sk dec, 6sc, 22dc, 20sc, sk dec, inc (in sc), 4dc, inc, sk dec, 12sc (6th in sc, last in dec), 9dc,

border: dc, 3sc, dc, rep from * to **, 2dc, Bsc.

Row 75: with Yarn2

border: Bsc, 2sc,

*dc, sc, sk sc and dc, /-FPtr, 21sc (1st in

skipped dc behind tr, 3rd, 19th and last in dc), \-FPtr, sk sc, sc (in dc), dc**, 5sc,

giraffe: 9sc, dec (1st leg in dec), 2dc, dec, 17sc (first 4 in sc), dec (1st leg in dec), 5dc, 22sc, 18dc, dec, 13sc (1st and 10-13 in sc), dec (1st leg below prev sc), 6dc (1st in sc), inc (in dec), sk dc, 8sc,

border: 5sc, rep from * to **, 2sc, Bsc.

Optional:

- **For darker nostrils, eyes, and ears,** make sts *in Italic Bold font* with Yarn3.

Switch to Yarn3 in advance: finish last st before Yarn3-section with Yarn3, make required sts with Yarn3, finish last st with Yarn1 and continue with it. Cut Yarn3, leave tails on WS.

When two Yarn3 sections are close to each other, cut Yarn3 only after 2nd section.

- If you don't want to use Yarn3 make all sts in affected rows with Yarn1.

- **Video for using Yarn3:**

<https://youtu.be/qWgV-Mikocg>

Row 76: with Yarn1

border: Bsc, 2dc,

*sc, dc, sc (in tr), dc (in dc behind tr), 19sc, dc (in dc behind tr), sc (in tr), dc, sc**, dc, 3sc, dc,

giraffe: 8dc, inc, sk dec, 3sc (last in dec), 16dc (first 4 in sc), inc, sk dec, 5sc, 8dc, dec, sc (behind dec), dec (1st leg in same dc as prev leg), dec, sc (behind prev dec),

with Yarn3 2sc,

sc, dec (1st leg below prev sc), 5dc, 18sc, sk dec, inc (in sc), 11dc (last 3 in sc), inc, sk dec, 8sc, dec (in first 2dc), 7dc,

border: dc, 3sc, dc, rep from * to **, 2dc, Bsc.

Row 77: with Yarn2

border: Bsc, 30sc, [dc, sc]x2,

giraffe: 10sc, dec (1st leg in dec), 2dc (2nd in dec), 18sc, dec (1st leg in dec), 4dc, 9sc (last in

dec), dc (in sc bet 2dec), sc (in dec), sk dec, 2/-dc (in first 2 of 4sc), 2sc (1st behind prev dc), 2\--dc (in last 2 of 4sc), sk dec, 4sc, sk dc, inc, 16dc, dec (2nd leg in dec), 15sc, dec (1st leg in dec), 6dc, inc, sk dec, 7sc,

border: [sc, dc]x2, 30sc, Bsc.

Row 78: with Yarn1

border: Bsc, 2dc,

*sc, dc, sc, 21dc (1st and last in dc), sc, dc, sc**,

dc, 3sc, dc,

giraffe: 10dc, 3sc (1st in dec), 18dc, 5sc (1st in dec), dec, sc (behind prev dec),

with Yarn3 3sc,

sc, dec (1st leg below prev sc), 2dc (2nd in dec), 2sc (in dc and sc),

with Yarn3 sc, sk dc, 2inc (in 2sc),

sk dc, sc, dec (1st leg in dec), 2dc, dec, 19sc (last in dec), 15dc, 9sc (1st in dec), dec (1st leg in dec), 6dc,

border: dc, 3sc, dc, rep from * to **, 2dc, Bsc.

Row 79: with Yarn2

border: Bsc, 2sc,

*dc, 3sc (2nd in sc), \--edc (in sc below 2nd of prev 3sc), sk dc, 17sc (1st in 3rd of 21dc), sk 2dc, /--edc (in sc bet dc-group and dc), 3sc (1st in 2nd skipped dc behind edc, 2nd in sc), dc**, 5sc,

giraffe: 10sc, 3dc (1st in dec), 18sc, 5dc (1st in dec), sk dec, 2/-dc (in first 2 of 5sc), 3sc (1st behind prev dc), dc (in last of 5sc), 3sc (1st in dec), 2dc (in dc and sc), 5sc (1st in sc), dec (in 2dc), 3sc (1st in dec), sk dec, inc, 12dc, dec, sc (behind prev dec), dec (1st leg in same dc as prev leg), 3dc (last in dec), 15sc, 8dc (1st in dec), inc, sk dec, 6sc,

border: 5sc, rep from * to **, 2sc, Bsc.

Row 80: with Yarn1

border: Bsc, 2dc,

*sc, dc, sc, dc (in dc behind edc), sc (in edc), 17dc (1st in 3rd of 21dc), sc (in edc), dc (in dc behind edc), sc, dc, sc**, dc, 3sc, dc,

giraffe: 9dc, inc, sk dc, 2sc, 18dc, 6sc, sk dc, **with Yarn3 inc (in 1st of 3sc), 2dc,**

sc, 2dc (1st in dec), inc, sk dc, sc,

with Yarn3 5dc (1st in sc),

sc (in dec), 2dc (1st in dec), dec (2nd leg in dec), 14sc, sk dec, dc3inc (in sc bet 2dec), sk dec, 3sc, 15dc, 10sc, dec (1st leg in dec), 5dc,

border: dc, 3sc, dc, rep from * to **, 2dc, Bsc.

Row 81: with Yarn2

border: Bsc, 2sc,

*dc, sc, dc, 3sc (2nd in sc), \--FPtr (in edc), sk dc, 13sc (1st in 3rd of 17dc), sk 2dc, /--FPtr (in edc), 3sc (1st in 2nd skipped dc behind tr, 2nd in sc), dc, sc, dc**,

[sc, dc]x2, sc,

giraffe: 11sc, 3\--dc (in 3dc), sk dc, 17sc, 7dc, 3sc (in first 3 of 4dc), sk dc, inc, 4sc, 2\--dc, sk dc, 3sc, sk dc, inc (in dec), 2sc, sk dec, 2/-dc (in inc), 3sc (1st behind prev dc), dec (1st leg below prev sc), 7dc, dec, 4sc (1st in sc), dec (1st leg in dec), 2dc, 14sc, sk dc, inc, 8dc, inc, sk dec, 5sc,

border: [sc, dc]x2, sc, rep from * to **, 2sc, Bsc.

Row 82: with Yarn1

border: Bsc, 2dc,

*[sc, dc (3rd in dc behind tr)]x3, sc (in tr), 13dc (1st in 3rd of 17dc), sc (in tr), [dc (1st in dc behind edc), sc]x3**, dc, 3sc, dc,

giraffe: 10dc, inc, sk dc, 6sc (first 2 in dc), dec (1st leg below prev sc), 12dc, 7sc,

with Yarn3 2dec,

2sc, 3dc, inc, sk dc, sc,

with Yarn3 dec, dc, dec,

sc, sk dc, 3/-dc (last in dec), sc, sk dc, inc (in 1st of 3sc), dc, inc, sk dec, 7sc, sk dec, inc (in sc), 3dc, 3sc (1st in dec), 13dc, dec, 12sc, dec (1st leg in dec), 4dc,

border: dc, 3sc, dc, rep from * to **, 2dc, Bsc.

Row 83: with Yarn2

border: Bsc, 2sc,

*[dc, sc]x2, dc, 3sc (2nd in sc), \--FPtr, sk dc, 9sc

(1st in 3rd of 13dc), sk 2dc, /-FPtr, 3sc (1st in 2nd skipped dc behind tr), [dc, sc]x2, dc**, 5sc (1st and last in dc),

giraffe: 13sc (last in sc), dec (in last 2 of 3dc), 3dc, inc, sk dec, 11sc, sk dc, inc, 6dc, sc (in 1st dec), sk dec, inc, dc, 5sc, 2\dc, sk dec, sc, sk dec, 2/-dc, 3sc, dec, 5sc, dec (1st leg in dec), 3dc, dec, 6sc (first 2 in sc), sk dc, inc (in dec), dc, inc, sk dc, 13sc (last in dec), 11dc, inc, sk dec, 4sc,

border: 5sc (1st and last in dc), rep from * to **, 2sc, Bsc.

Row 84: with Yarn1

border: Bsc, 2dc,

*[sc, dc]x4 (last dc in dc behind tr), sc (in tr), 9dc (1st in 3rd of 13dc), sc (in tr), dc (in dc behind tr), [sc, dc]x3, sc **, dc, 3sc, dc,

giraffe: 12dc, inc (in sc), sk dec, 6sc (last in sc), dec (1st leg in dc below prev sc), 8dc, dec, 8sc,

with Yarn3 dec (in 2dec),

2sc, sk dc, inc, 3dc, inc, sk dc, 3sc (2nd in sc), sk dc, inc, 2dc, sc (in dec), 4dc, inc, sk dec, 3sc, sk dec, inc (in 1st of 2sc), 4dc (1st in sc), dec, 5sc, dec, 12dc (last in dec), 17sc (14-17 in sc),

border: dc, 3sc, dc, rep from * to **, 2dc, Bsc.

Row 85: with Yarn2

border: Bsc, 2sc,

*[dc, sc]x4, 2sc (in sc and dc), \-FPtr, sk dc, 5sc (1st in 3rd of 9dc), sk 2dc, /-FPtr, 2sc (in skipped dc behind tr and sc), [sc, dc]x4 **, [sc, dc]x2, sc,

giraffe: 16sc (last 2 in sc), dec (1st leg below prev sc), 2dc, inc (in sc), sk dec, 9sc (last in dec), 7dc, sc (in sc), 1\dc (in dc below prev sc), sk dec, dc, dec, 7sc, dec, dc, dec, 4sc, inc (in dec), sk dc, 5sc, dec (1st leg in dec), sc, 2\dc (1st in dc below prev sc), sk 1st dc of inc, 6sc (last in dec), 3dc, dec (in inc), 13sc (1st in sc, 2nd in dec), sk dc, inc, 2dc, dec, 3sc (1st behind prev dec), dec (1st leg below prev sc), 9dc (6-9 in sc),

border: sc, [dc, sc]x2, rep from * to **, 2sc, Bsc.

Row 86: with Yarn1

border: Bsc, 2dc,

*[sc, dc]x5 (last in dc behind tr), sc (in tr), 5dc (1st in 3rd of 9dc), sc (in tr), [dc (1st in dc behind tr), sc]x5 **, dc, 3sc, dc,

giraffe: 15dc (last in sc), inc (in sc), sk dec, 4sc, dec (1st leg in dec), 8dc (last in dec), 7sc, inc (in sc), sk dc, 2sc (2nd in dec), 7dc, 2sc (1st in dec), sk dec, inc, 3dc, 2sc, dec, 4dc, sc (in dec), inc (in sc), sk dc, sc, dec (in inc), 5dc (last in dec), 4sc (last in dec), 11dc (1st in sc, 2nd in dec), dec, 5sc (1st in sc), sk dec, inc, dc, inc, sk dec, 9sc,

border: dc, 3sc, dc, rep from * to **, 2dc, Bsc.

Row 87: with Yarn2

border: Bsc, 2sc,

*[dc, sc]x5, 2sc (in sc and dc), \-FPtr, sk dc, sc (in 3rd of 5dc), sk 2dc, /-FPtr, 2sc (in skipped dc behind tr and sc), [sc, dc]x5 **, 5sc,

giraffe: 18sc, (last in sc), dec (1st leg in dc below prev sc), 2dc, 8sc (1st in dec), sk dc, inc, 6dc, 2sc, 3\dc (last in dec), sk dc, 6sc, dc (in dec), dec (2nd leg in dec), 4sc, sk dc, 1/-dc, sc (behind prev dc), 2\dc (1st in same dc as prev /-dc), sk dec, 3sc, sk dc, inc (in dec), 2sc, 2\dc, sk dec, 5sc, 4dc (last in dec), 11sc, sk dec, inc (in sc), 3dc, dec (2nd leg in dec), 9sc (5 in dc, 4 in sc), dec (1st leg in dc below prev sc), 4dc,

border: 5sc, rep from * to **, 2sc, Bsc.

Row 88: with Yarn1

border: Bsc, 2dc,

*[sc, dc]x6 (last in dc behind tr), sc (in tr), dc (in dc bet 2tr), sc (in tr), [dc (1st in dc behind tr), sc]x6 **, dc, 3sc, dc,

giraffe: 18dc (last in sc), 3sc (1st in dec), 7dc (1st in dec), dec, 8sc, dc, inc, sk dc, 2sc, dec, 5dc, 2sc (2nd in dec), 3dc, dec, sk dc, 1/-dc (in

sc), 3sc (1st in sc behind prev dc, last 2 in dc), dec (1st leg in dec), dc, dec, 2sc, 2dc, 2sc, dec (1st leg in dec), 4dc, 4sc, 10dc, dec (2nd leg in dec), 5sc, sk dec, inc, 7dc (first 4 in dc), inc (in sc), sk dec, 4sc,

border: dc, 3sc, dc, rep from * to **, 2dc, *Bsc*.

Row 89: with Yarn2

border: *Bsc*, 2sc,

*[dc, sc]x6, sk sc and dc, /-FPtr (in /-tr), sc (in skipped dc behind tr), \-FPtr (in \-tr; cross prev tr), sk sc, [sc (in dc), dc]x6 **, [sc, dc]x2, sc,

giraffe: 18sc, 3dc (1st in dec), 7sc, sk dec, inc, 7dc, 3sc, 3\dc, sk dec, 4sc, sk dc, 2inc (2nd in dec), sk dc, sc, sk dc and dec, edc (in /-dc bet skipped dec and next dc), 2sc (in skipped dec behind edc and next dc), dc (in sc before 2\dc), sc (in 1st of 2\dc), 2\dc (in 2\dc), sk dec, sc, sk dec, 1/-dc, inc, 2sc, dc, inc, sk dec, 4sc, 3dc, inc, sk dc, 9sc, sk dec, inc, 3dc, dec (2nd leg in dec), 15sc (last 4 in sc),

border: [sc, dc]x2, sc, rep from * to **, 2sc, *Bsc*.

Row 90: with Yarn1

border: *Bsc*, 2dc,

*[sc, dc]x6, sc (in tr), dc (in dc bet 2tr), sc (in tr), [dc, sc]x6 **, dc, 3sc, dc,

giraffe: 18dc, 3sc, 6dc, dec (2nd leg in dec), 8sc, sk dc, inc, dc, inc, sk dc, 2sc, dec (1st leg in dec), 2dc, dec, 5sc (last in sc), sk edc, inc (in dec behind edc), dc (in dc), sc (in dc), inc (in sc), sk dc, 5sc (2nd in sc), 2dc, 3sc, dec (1st leg in dec), 3dc, 5sc, dec, 7dc, dec (2nd leg in dec), 5sc, sk dec, inc, 14dc (last 4 in sc),

border: dc, 3sc, dc, rep from * to **, 2dc, *Bsc*.

Row 91: with Yarn2

border: *Bsc*, 2sc,

*[dc, sc]x5, sk sc and dc, /-FPtr, 5sc (1st in skipped dc behind tr, 2nd and 4th in sc), \-FPtr, sk sc, [sc (in dc), dc]x5 **, 5sc,

giraffe: 18sc, 2dc, inc, sk dc, 5sc, sk dec, inc,

6dc, dec, 5sc, dec, dc, 4sc (1st and last in dec), 4dc, dec (in sc and edc), 3sc, dc, 4sc (in inc and 2sc), dec (in sc and dc), 2dc, 2sc, dec, sc (behind prev dec), 2\dc (1st in same st as prev dc), sk dec, 2sc, sk dc, inc, 3dc, inc, sk dec, 7sc, sk dec, inc, 3dc, dec (2nd leg in dec), 16sc, border: 5sc, rep from * to **, 2sc, *Bsc*.

Row 92: with Yarn1

border: *Bsc*, 2dc,

*[sc, dc]x5, sc (in tr), 5dc (1st and last in dc behind tr, 2nd and 4th in sc), sc (in tr), [dc, sc]x5 **, dc, 3sc, dc,

giraffe: 18dc, 4sc, dec, 3dc, dec (2nd leg in dec), 9sc (last in dec), 2dc, sc, dc, inc, sk dec, sc, 4dc (1st and last in dec), 4sc, sk dec, inc, 2dc, sc, 3dc (1st in dc), inc (in sc), sk dec, 2sc, 2dc, sc (in dec), inc (in sc), sk dc, sc, dec (1st leg in dec), dec, 7sc, dec (1st leg in dec), 3dc, dec, 8sc (first 2 in sc, last in dec), 16dc,

border: dc, 3sc, dc, rep from * to **, 2dc, *Bsc*.

Row 93: with Yarn2

border: *Bsc*, 2sc,

*[dc, sc]x4, sk sc and dc, /-FPtr, 9sc (1st in skipped dc behind tr, 2nd and 8th in sc), \-FPtr, sk sc, [sc (in dc), dc]x4 **, [sc, dc]x2, sc,

giraffe: 18sc, 3dc, inc, sk dec, 3sc, sk dec, inc, 7dc, sc, 1\dc (in dec), sk dc, sc, dc, 3sc, dec (1st leg in dec), 4sc, 3dc, dec (2nd leg in dec), 3sc, sk dc, inc, 5sc, dec (1st leg in dec), dc, 2sc, dc (in dec), 2sc, dec, sc (in dec), sk dec, inc, 6dc, 4sc (1st in dec), sk dec, inc (in 1st of 2sc), 7dc (1st in sc, last in dec), 16sc,

border: [sc, dc]x2, sc, rep from * to **, 2sc, *Bsc*.

Row 94: with Yarn1

border: *Bsc*, 2dc,

*[sc, dc]x4, sc (in tr), 9dc (1st and last in dc behind tr, 2nd and 8th in sc), sc (in tr), [dc, sc]x4 **, dc, 3sc, dc,

giraffe: 18dc, 17sc (6-8 in sc), inc, sk dc, dec

(in 2dc), sk dc, inc, 2dc, sc (in dec), 4dc, 4sc (last in dec), dc, dec, 3sc (1st in sc), 5dc, 2sc (1st in dec), dc, inc, sk dc, dc, inc, sk dec, dec (in 2dec), 8sc, 2dc (1st in dec), dec, 9sc (1st in sc), sk dc, inc, 15dc,

border: dc, 3sc, dc, rep from * to **, 2dc, *Bsc*.

Row 95: with Yarn2

border: *Bsc*, 2sc,

*[dc, sc]x3, sk sc and dc, /-FPtr, 13sc (1st in skipped dc behind tr, 2nd and 12th in sc), \-FPtr, sk sc, [sc (in dc), dc]x3 **, 5sc,

giraffe: 18sc, 17dc (6-8 in sc), 2sc, dec (leg in dc's on both sides from dec), 4sc, dc (in dec), 4sc, 4dc (last in dec), sc, sk dec, 1/-edc (in 1st dc of inc), 3sc (in 3sc), 1\dc (in 2nd dc of inc), sk dc, 4sc, 2dc (1st in dec), 3sc, 1\dc (in dc), sk dc, 2sc (in inc), dec (1st leg in dec before next dec, 2nd leg in 1st dc of inc after dec), 2/-dc, 4sc (1st behind prev dc), 3\dc (1st below prev sc), sk dc, sc, sk dec, inc (in sc), 7dc, dec, 17sc,

border: 5sc, rep from * to **, 2sc, *Bsc*.

Row 96: with Yarn1

border: *Bsc*, 2dc,

*[sc, dc]x3, sc (in tr), 13dc (1st and last in dc behind tr, 2nd and 12th in sc), sc (in tr), [dc, sc]x3 **, dc, 3sc, dc,

giraffe: 18dc, 17sc, 2dc, sc (in dec), 4dc, sc, 3dc, inc, sk dc, 4sc (last in sc), sk edc, inc (in 1st of 3sc), 2dc (in rem 2sc), sc (in dc), dec (in first 2 of 5dc), 2dc, inc, sk dc, sc, 3dc, sc (in dc), dec, dc, 3sc (1st in dec), 3dc, inc, sk dc, 13sc (3rd in sc, last in dec), 11dc, dec, 5sc (1st behind prev dec),

border: dc, 3sc, dc, rep from * to **, 2dc, *Bsc*.

Row 97: with Yarn2

border: *Bsc*, 2sc,

*[dc, sc]x2, sk sc and dc, /-FPtr, 17sc (1st in skipped dc behind tr, 2nd and 16th in sc), \-FPtr, sk sc, [sc (in dc), dc]x2 **, [sc, dc]x2, sc,

giraffe: 18sc, 17dc, 2sc, dc (in dec), 4sc, dc,

5sc, dec, 2dc, dec (in sc and edc), 4sc, dc, 5sc (1st in dec), 2\dc, sk dc, 2sc, dc, 2sc (1st in dec), 3dc (1st in dec), 4sc, sk dc, inc (in 2nd of 3dc), 4dc (2nd in sc), dec, 5sc (1st behind prev dec), 2dc (2nd in dec), 11sc, sk dec, inc (behind skipped dec), 4dc (in sc),

border: [sc, dc]x2, sc, rep from * to **, 2sc, *Bsc*.

Row 98: with Yarn1

border: *Bsc*, 2dc,

*[sc, dc]x2, sc (in tr), 17dc (1st and last in dc behind tr, 2nd and 16th in sc), sc (in tr), [dc, sc]x2 **, dc, 3sc, dc,

giraffe: 5sc, dec (1st leg below prev sc), 12dc, 17sc, 2dc, sc, 4dc, sc, 4dc, inc, sk dec, 3sc (last in dec), 4dc, sc, 5dc (1st in dec), 2sc, 3\dc, sk dc, 2dc (1st in dec), 3sc, 3dc, dec, 6sc, sk dec, inc (behind prev dec), 4dc, 2sc, 10dc, dec (2nd leg in dec), 6sc,

border: dc, 3sc, dc, rep from * to **, 2dc, *Bsc*.

Row 99: with Yarn2

border: *Bsc*, 2sc,

*dc, sc, sk sc and dc, /-FPtr, 21sc (1st in skipped dc behind tr, 2nd and 20th in sc), \-FPtr, sk sc, sc (in dc), dc **, 5sc,

giraffe: 4dc, inc, sk dec, 11sc, sk dc, 2/-dc, 4sc (1st behind prev dc), dec (1st leg below prev sc), 11dc, 2sc, dc, 4sc, dc, 6sc, dec (1st leg in dec), 2dc (2nd in dec), 4sc, inc, sk dc, 3sc, sk dc, 2inc, sk dc, 2sc, 1\dc, sk dc, sc, 3dc, 4sc (last in dec), 4dc, dec, 6sc (1st in sc), sk dc, inc, dc, 10sc, sk dec, inc, 5dc,

border: 5sc, rep from * to **, 2sc, *Bsc*.

Row 100: with Yarn1

border: *Bsc*, 2dc,

*sc, dc, sc (in tr), 21dc (1st and last in dc behind tr, 2nd and 20th in sc), sc (in tr), dc, sc **, dc, 3sc, dc,

giraffe: 7sc (last in sc), dec (1st leg in dc below prev sc), 8dc, dec, sc, sk dc, inc (in 1st of 4sc),

2dc, inc, sk dec, 10sc, sk dc, 1/-dc, inc, sc, 4dc, sc, 5dc, inc, sk dec, 2sc, 4dc, 2sc, dec, dc, dec, 4sc, dec, dc, sc, 2\dc, sk dc, 2sc, 3dc, inc (in dec), sk dc, 3sc, sk dec, inc (in sc), 4dc, dec, 3sc, 9dc, dec (2nd leg in dec), 7sc,

border: dc, 3sc, dc, rep from * to **, 2dc, *Bsc*.

Row 101: with Yarn2

border: *Bsc*, 30sc, [dc, sc]x2,

giraffe: 5sc, 3\dc (in inc and sc), sk dec, 8sc, sk dec, 2/-dc, 6sc, dec (1st leg in dec), 8dc, dec, 2sc, sk dc, inc, 4sc, dc, 7sc, 3\dc (1st in dec), sk dc, 3sc, dc, inc, sk dec, sc, sk dec, inc, 2dc, inc, sk dec, sc, dc, 2sc, dec, dc, 4sc, sk 2nd dc of inc, 3/-dc (1st in 2nd dc), 7sc (1st in sc), sk dec, inc, dc, inc, sk dc, 8sc, sk dec, inc, 2dc, dec, 3sc (1st behind prev dec),

border: [sc, dc]x2, 30sc, *Bsc*.

Row 102: with Yarn1

border: *Bsc*, 2dc,

*[sc, dc]x2, 19sc, [dc, sc]x2, **, dc, 3sc, dc,

giraffe: 4dc, inc, sk dc, 3sc (in 2dc and sc), dec (1st leg in dc below prev sc), 5dc, dec (2nd leg in dec), sc, sk dc, inc, 4dc, inc, sk dec, 8sc, sk dec, 3/-dc, 2sc, dc, dec, sc (behind prev dec), dec (1st leg in same dc as 2nd leg of prev dec), sc, 6dc, inc, sk dc, 2sc, dec, 2dc, 3sc, dc3tog (1st and last legs in dec), 8sc (7th in sc), 2dc, 2sc (1st in dec), 3dc, dec, 3sc, 6dc (1st in sc), dec (2nd leg in dec), 5sc, dec, 6dc, dec (2nd leg in dec), 4sc, sk dec, inc (in 1st of 3sc), 2dc,

border: dc, 3sc, dc, rep from * to **, 2dc, *Bsc*.

Row 103: with Yarn2

border: *Bsc*, 2sc,

*dc, 3sc (2nd in sc), \-edc (in sc below 2nd of prev 3sc), sk sc, 17sc (1st in 2nd of 19sc), sk sc and dc, /-edc (in sc bet 2dc), 3sc (1st in skipped dc behind edc, 2nd in sc), dc **, 5sc,

giraffe: 6sc, dec (in first 2dc), dc (in dc), inc (in sc), sk dec, 5sc, sk dec, 2/-dc, 8sc, dec (1st leg in dec), 6dc, dec (2nd leg in dec), 2sc, sk dc, inc, dc, sc, sk dec, inc (in sc bet 2dec), sk dec, inc,

9sc (last in sc), 2\dc (in 2nd and 3rd of 3dc), sk dec, sc, sk dc, 2/-dc, sc (behind prev dc), \-dc (in same dc as prev dc), dec (1st leg in next dc, 2nd in dc after dc3tog), dc (in same dc as prev dc), 4dc, dec (2nd leg in sc), sc (behind prev dec), dec (1st leg in same sc as 2nd leg of prev dec), 2sc, 2dc (1st in dec), 3sc, sk dec, inc, 2dc, 7sc (last in dec), 3dc, dec (in inc), 8sc (1st in sc, 2nd in dec), sk dec, inc, dc, dec, 5sc (1st in sc),

border: 5sc, rep from * to **, 2sc, *Bsc*.

Row 104: with Yarn1

border: *Bsc*, 2dc,

*[sc, dc]x2, sc (in \-edc), dc, 15sc, dc, sc (in /-edc), [dc, sc]x2**, dc, 3sc, dc,

giraffe: 5dc, inc, sk dec, 9sc (first 3 and last in dc), sk dc, inc, 6dc, inc, sk dec, 7sc (last in dec), dec, 1/-dc, 3sc, dec (2nd leg in dec), 4sc, 8dc, inc (in sc), sk dc, sc, dc3tog (1st leg in dec), sc, sk dc, inc (in sc), 8sc (2nd and last in dec), inc (in sc bet 2dec), sk dec, 2dc, 2sc, 2dc, dec (2nd leg in dec), 4sc, 7dc (last in dec), 3sc, sk dec, inc (in sc), 4dc (1st in dec), dec, 5sc (first 2 in sc), sk dec, inc (in sc), 4dc,

border: dc, 3sc, dc, rep from * to **, 2dc, *Bsc*.

Row 105: with Yarn2

border: *Bsc*, 2sc,

*dc, sc, dc, 3sc (2nd in sc), \-FPtr (in edc), sk sc, 13sc (1st in 2nd of 15sc), sk sc and dc, /-FPtr (in edc), 3sc (1st in skipped dc behind tr), dc, sc, dc**,

[sc, dc]x2, sc,

giraffe: 7sc, dec (1st leg in dec), 7dc (first 2 in dc), dec (in dc), 10sc, dec (1st leg in dec), 6dc (last in dec), sc (in dec), sk dc, inc, dc, sc, dec (legs in dc's on both sides from dec), 1/-dc, sc (behind prev dc), 2dc, 10sc, 2\dc, sk dc3tog, dec, 2sc, dec (2nd leg in dec), sc (behind prev dec), dec (1st leg in same dec as 2nd leg of prev dec), 4dc, inc (in dec), sk dc, 3sc, dc, inc, sk dc, sc, sk dec, 2/-dc, sc (behind prev dc), 3\dc (1st in same dc as prev dc), sk dc, 5sc, sk dc, inc, dc, dec (2nd leg in dec), 6sc, sk dec, inc (in 1st of 2sc), 2dc (1st in sc), dec, 7sc (1st in sc),

border: [sc, dc]x2, sc, rep from * to **, 2sc, Bsc.

Row 106: with Yarn1

border: Bsc, 2dc,

*[sc, dc]x2, 2dc (2nd in dc behind tr), sc (in tr), dc, 11sc, dc, sc (in tr), 2dc (1st in dc behind tr, 2nd in sc), [dc, sc]x2, **, dc, 3sc, dc,

giraffe: 6dc, inc, sk dec, 8sc (last in dec), 9dc, inc, sk dec, 6sc, dec (1st leg in dec), 3sc, dc (in sc), sc (in dec), sk dc, inc (in sc), sc, sk dc, inc, 8dc, inc, sk dc, sc, sk dec, inc, dc, sc (in dec), inc (in sc bet 2dec), sk dec, 6sc, dec (in inc), 2dc, 5sc (4th in sc), sk dc, dc3inc, sk dc, 2sc, dec, 3dc, dec, 3sc (in inc and dc), sk dec, inc, 2dc, dec, 6sc (first 2 in sc), sk dec, inc (in sc), 6dc,

border: dc, 3sc, dc, rep from * to **, 2dc, Bsc.

Row 107: with Yarn2

border: Bsc, 2sc,

*dc, sc, dc, 5sc (4th in sc), \-FPtr, sk sc, 9sc (1st in 2nd of 11sc), sk sc and dc, /-FPtr, 5sc (1st in skipped dc behind tr, 2nd in sc), dc, sc, dc**, 5sc,

giraffe: 8sc, dec (1st leg in dec), 6dc, inc (in dec), sk dc, 10sc, dec (1st leg in dec), 5dc, sk dec, 2/-dc, 2sc (1st behind prev dc), 1\dc (below prev sc), sk dc, 3sc (1st in sc), dec, 12sc, dc3tog (3rd leg in dec), 3sc, dc (in dec), 2sc, dec (1st leg in dec), dec, 2sc (1st behind prev dec), 3\dc (1st below prev sc), sk dec, 2sc, 4dc (last in sc), inc, sk 1st dc of dc3inc, 2sc, 2dc (in 2nd and 3rd of 3dc), 4sc (1st in dec), sk dec, 4/-dc (last in dec), 4sc, sk dec, inc (in 1st of 2sc), 2dc (in sc and dc), dec, 10sc (first 2 in sc),

border: 5sc, rep from * to **, 2sc, Bsc.

Row 108: with Yarn1

border: Bsc, 2dc,

*sc, dc, sc, 5dc (4th in sc, last in dc behind tr), sc (in tr), dc, 7sc, dc, sc (in tr), 5dc (1st in dc behind tr, 2nd in sc), sc, dc, sc**, dc, 3sc, dc,

giraffe: 8dc, 9sc (1st in dec), dec, 9dc, 7sc (1st in

dec), sk dc, 2inc (in 2sc), sk dc, sc (in sc), dec (in sc below pev sc and dc), dc, sc (in dec), 12dc, sc (in dc3tog), 3dc, sc, dc, inc, sk dec, sc (in dec), dc (in 1st of 2sc), inc, sk dc, 2sc, dec (1st leg in dec), dc, 6sc, dec (in 1st and 2nd dc of dc3inc), dc, 2sc, 3dc (1st in dec), dec (2nd leg in dec), 4sc, dc, dec, 6sc (first 2 in sc), sk dec, inc (in 1st of 2sc), 9dc (1st in sc),

border: dc, 3sc, dc, rep from * to **, 2dc, Bsc.

Row 109: with Yarn2

border: Bsc, 2sc,

*dc, sc, dc, 7sc (6th in sc), \-FPtr, sk sc, 5sc (1st in 2nd of 7sc), sk sc and dc, /-FPtr, 7sc (1st in skipped dc behind tr, 2nd in sc), dc, sc, dc**, [sc, dc]x2, sc,

giraffe: 8sc, 8dc (1st in dec), inc, sk dec, 8sc, sk dc, inc (in dec), 5dc, inc, sk dc, 3sc, dec (in dc and sc), sc (in dec), sk dc, inc (in dec), 12sc, inc (in dc3tog), sk dc, 2sc, inc, sk dc, 2sc, dec (in 2dec), 2sc, sk dc, 2inc (in 2nd and 3rd of 3dc), sk dec, sc, dec, 3sc (1st behind prev dec), dec (1st leg below prev sc), dc, sc (in dec), sk dc, 2inc, sk dc, 2sc, sk dec, inc, 3dc, sc (in dc), sk dec, inc (in 1st of 2sc), 2dc (in sc and dc), dec, 13sc (first 2 in sc),

border: [sc, dc]x2, sc, rep from * to **, 2sc, Bsc.

Row 110: with Yarn1

border: Bsc, 2dc,

*sc, dc, sc, 7dc (6th in sc, last in dc behind tr), sc (in tr), dc, 3sc, dc, sc (in tr), 7dc (1st in dc behind tr, 2nd in sc), sc, dc, sc**, dc, 3sc, dc,

giraffe: 8dc, 11sc (last in sc), dec (1st leg in dc below prev sc), 4dc, dec, 7sc (1st in sc), **with Yarn3 3sc**, 2dec (in 2inc), sc (in sc behind prev dec), sk dec, 2/-dc (1st in dec), 2sc, 12dc, 2sc, 3\dc, sk dc, 2sc (in dc and sc), dec (in inc), sc (in dec), dc, dec (in inc), **with Yarn3 4sc (in 2inc)**, dec (1st leg in dec), sc (in dec), 3dc (in 3sc), 2sc (1st in dec), dec (1st leg in dec), 16sc (5-6 and 12th in sc), sk dec, inc (in 1st of 2sc), 12dc (1st in sc),

border: dc, 3sc, dc, rep from * to **, 2dc, *Bsc*.

Row 111: with Yarn2

border: *Bsc*, 2sc,

*dc, sc, dc, 9sc (8th in sc), \-FPtr, sk sc, sc (in 2nd of 3sc), sk sc and dc, /-FPtr, 9sc (1st in skipped dc behind tr, 2nd in sc), dc, sc, dc**, 5sc,

giraffe: 7sc, sk dc, 3/-dc, 7sc (1st behind prev dc), 3\ -dc (1st below prev sc, last in sc), sk dec, 4sc, sk dec, inc (in sc), 5dc, dec, 3sc (1st behind prev dec), 1\ -dc (in 2nd dc of inc), sk 2dec, 2/-dc (in sc and dec), sc, sk dc, inc, dc, 12sc, dc, inc, sk dc, 2sc, 3\ -dc (in inc and sc), sk dec, dc (in dec), sc (in dc), sk dec, 1/-dc (in 1st dc of inc), 4sc (1st behind prev dc), 1\ -dc (in 2nd dc of inc), sk dec, inc (in dec), sk dc, 2sc, 2dc (in dec and dc), sk dec, inc, 7dc (4-5 in sc), dec, sc (behind prev dec), dec (1st leg in same dc as 2nd leg of prev dec), 4dc (1st in sc), dec (2nd leg in dec), 14sc,

border: 5sc, rep from * to **, 2sc, *Bsc*.

Row 112: with Yarn1

border: *Bsc*, 2dc,

*sc, dc, sc, 9dc (8th in sc, last in dc behind tr), sc (in tr), dc (in sc bet 2tr), sc (in tr), 9dc (1st in dc behind tr, 2nd in sc), sc, dc, sc**, dc, 3sc, dc,

giraffe: 6dc, dec, 2sc, sk dc, inc (behind prev dc), 5dc, inc, sk dc, 13sc (3-6 in sc), sk dec,

with Yarn3 inc, dc, inc,

sk dc, sc, sk dc, 2/-dc, 3sc, 11dc, inc, sk dc, 3sc (last in sc), 2\ -dc (in 2nd and 3rd of 3dc), sk dc, 4sc (last in sc), sk dc,

with Yarn3 inc, 2dc, inc,

sk dc, 2sc, dec, dc, 11sc, sk dec, inc (in sc bet 2dec), 6sc (1st and last in dec), 14dc,

border: dc, 3sc, dc, rep from * to **, 2dc, *Bsc*.

Chart 3 on p. 41.

Row 113: with Yarn2

border: *Bsc*, 2sc,

*dc, sc, dc, 9sc (in dc), sk sc and dc, /-FPtr (in /-tr), sc (in skipped dc behind tr), \-FPtr (in \-tr; cross prev tr), sk sc, 9sc (in dc), dc, sc,

dc**,

[sc, dc]x2, sc,

giraffe: 6sc, sk dec, 3/-dc, 10sc (last in sc), dec (in 2nd and 3rd of 3dc), 10dc (first 4 in sc), dec (2nd leg in dec), 5sc, dc2tog (1st leg in \-dc, sk dc, 2nd leg in 2nd /-dc), sc, sk dc, inc, 2dc, 13sc, dec, dc, inc (in sc), sk dc, sc, dec, 2dc, inc (in sc), sk dc, 5sc, dec, dc, sc (in dec), sk dc, inc, 2dc, dec, 8sc (1st behind prev dec, last in dc), sk dc, inc (in dec), 4dc, inc (in dec), sk dc, 13sc,

border: [sc, dc]x2, sc, rep from * to **, 2sc, *Bsc*.

Row 114: with Yarn1

border: *Bsc*, 2dc,

*sc, dc, sc, 9dc, sc (in tr), dc (in dc bet 2tr), sc (in tr), 9dc, sc, dc, sc**, dc, 3sc, dc,

giraffe: 5dc, dec (2nd leg in dec), 2sc, sk dc, inc, 8dc, inc (in sc), sk dec, 11sc (last in dec),

with Yarn3 3dc, dec,

7sc (in sc, dec, sc, 4dc), 13dc, 10sc (1st in dec, 5th in sc),

with Yarn3 dec, 3dc, inc,

sk dec, sc, dec (1st leg in dec), 4sc, sk dec, inc (behind skipped dec), 4dc, dec, 11sc (first 2 and last in sc), dec (1st leg below prev sc), 11dc,

border: dc, 3sc, dc, rep from * to **, 2dc, *Bsc*.

Row 115: with Yarn2

border: *Bsc*, 2sc,

*dc, sc, dc, 7sc, sk 2dc, /-FPtr, 5sc (1st in 2nd skipped dc behind tr, 2nd and 4th in sc), \-FPtr, sk dc, 7sc (1st in 3rd of 9dc), dc, sc, dc**, 5sc,

giraffe: 5sc, sk dec, 3/-dc, 12sc, dec (1st leg in dec), 10dc, 3sc, sk dec, 2/-dc (in sc and dec), inc (in sc), sc, dec (1st leg below prev sc), sc, dc, 13sc, dc (in dec), dec, 3sc (1st behind prev dec), 4dc (1st in dec), sc, 1\ -dc (in 2nd dc of inc), sk dec, 5sc, dec (1st leg in dec), sk dec, inc, 2dc, dec (2nd leg in dec), 6sc, sk dec, inc (in 1st of 2sc), 4dc (1st in sc), dec, 2sc (1st behind prev dec), dec (1st leg below prev sc), dc, inc (in sc),

sk dec, 11sc,
border: 5sc, rep from * to **, 2sc, Bsc.

- **Left eye in Rows 116-119 (Rows 61-64 in video for Giraffe Bag):**

<https://youtu.be/lgPNK2PBrTo>

Row 116: with Yarn1

border: Bsc, 2dc,

*sc, dc, sc, 7dc, sc (in tr), dc (in dc behind tr),
3sc, dc (in dc behind tr), sc (in tr), 7dc (1st in 3rd
of 9dc), sc, dc, sc**,
dc, 3sc, dc,

giraffe: 7sc (last 2 in dc), sk dc, inc, 11dc, 7sc
(1st in dec),

*with Yarn3 6sc (last 2 in sc), sk sc and dc, 1/-
edc (in sc bet posts of 2dc; push posts apart to
find), sc (in skipped dc behind edc), sk 2nd dc,
1/-dc (in sc bet posts of skipped dc and inc;
push posts apart to find),*

2sc (in inc), dc (in sc), sc (in dec), dc (in sc), sc
(in dc), 13dc, 2sc (2nd in dec), 3dc, 2sc,

*with Yarn3 3sc (in 2dc and sc), 1\dc (in sc
below prev sc), sk dc, 8sc (first 5 in sc),*

2sc, sk dec, inc, 2dc, dec, 8sc (first 2 in sc), sk
dec, 2inc (in 2sc), sk dec, 3sc, dec (1st leg in
dec), 10dc,

border: dc, 3sc, dc, rep from * to **, 2dc, Bsc.

Row 117: with Yarn2

border: Bsc, 2sc,

*dc, sc, dc, 5sc, sk 2dc, /-FPtr, 9sc (1st in 2nd
skipped dc behind tr), \-FPtr, sk dc, 5sc (1st in
3rd of 7dc), dc, sc, dc**,

[sc, dc]x2, sc,

giraffe: 5dc (in 5sc), dec (in first 2 of 3dc),
14sc (1st in sc), 4dc (1st in dec), dec, dc-edc-tog,
7sc (all in sc, first 2 behind prev dec), sk edc,
dc-edc-tog (in dc behind edc and in next dc), sc
(in sc behind prev dec), sk dc, 1/-dc (in 1st dc of
inc), inc (in 2nd dc of inc), sc (in dc), dc (in
dec), sc (in dc), dc (in dc), 13sc, 2dc (2nd in
dec), 3sc, dc (in dc), sc (in sc), 1\dc (in dc
below prev sc), sk sc, sc, 2\dc (in dc below
prev sc and sc behind \dc), sk \dc, 8sc, dec
(1st leg below prev sc), dec (2nd leg in dec), 4sc,

sk dec, inc (in 1st of 2sc), 6dc (1st in sc), dec
(2nd leg in dec), 4sc, dec (1st leg in dec), dc, inc,
sk dec, 10sc,

border: [sc, dc]x2, sc, rep from * to **, 2sc,
Bsc.

Row 118: with Yarn1

border: Bsc, 2dc,

*sc, dc, sc, 5dc, sc (in tr), dc (in dc behind tr),
7sc, dc (in dc behind tr), sc (in tr), 5dc (1st in 3rd
of 7dc), sc, dc, sc**,
dc, 3sc, dc,

giraffe: 5sc, sk dec, inc (in sc), 13dc, 5sc (last
in dec), sk 2nd dec,

*with Yarn3 1/-dc (in 1st of 2sc behind skipped
dec), sc (behind prev dc), 1/-dc (1sc apart
from prev dc), sc (behind prev dc), 1/-dc (1sc
apart from prev dc), 3sc (1st behind prev dc;
all in sc), sk dec, 2/-dc (in sc behind dec and
in dc),*

sk dc, dc (in sc bet posts of skipped dc and inc;
push posts apart to find), sc (in 1st dc of inc), sk
2nd dc of inc, inc (in dc), sk dc, inc (in dc), sk
dc, inc, 12dc, 2sc (in dc), 3dc, sc, inc (in sc), sk
dc,

*with Yarn3 2\dc (in 2sc), sk dc, 5sc (1st in dc),
1\dc (in sc below prev sc), sk sc, sc, 1\dc (in
sc below prev sc), sk sc, sc (in sc before dec),
1\dc (in sc below prev sc/ behind dec),*

sk 2dec, inc, dc, dec, 9sc (1st in sc), sk dec, inc,
2dc, inc, sk dec, 4sc (last in sc), dec (1st leg in
dc below prev sc), 8dc,

border: dc, 3sc, dc, rep from * to **, 2dc, Bsc.

Row 119: with Yarn2

border: Bsc, 2sc,

*dc, sc, dc, 3sc, sk 2dc, /-FPtr, 13sc (1st in 2nd
skipped dc behind tr), \-FPtr, sk dc, 3sc (1st in
3rd of 5dc), dc, sc, dc**,
5sc,

giraffe: dc, dec, 17sc (first 3 in sc), sk dc, inc,
3dc, dec (in 2dec), [sk dc, 2/-dc (in 2sc)]x2, sk
dc, 1/-dc (in sc behind skipped dc), dc-edc-tog
(in 2sc), 3sc (in 2sc behind dec and in dc), sk
dc, 1/-dc (in dc bet posts of skipped and next
dc), sk dc, 2/-dc (in inc), [sc (in 1st dc of inc),

sk 2nd dc, 1/-dc (in dc bet posts of 2inc)]x2,
14sc, 2dc, 3sc, dc, 2sc (in inc), 1\dc (in dc), sk
dc, 2sc (in dc and sc), dec (in dc and sc), 2dc
(in sc), inc (in sc), sk dc, 2\dc (in sc), sk dc,
1\dc (in 1st of 2sc), dec (1st leg in next sc, sk
dc, 2nd leg in 2nd of 2dec), 3sc (in inc and dc),
sk dec, inc (in sc), 6dc, dec, 7sc (1st in sc),
dec(1st leg in dec), 2dc, inc (in sc), sk dec, 8sc,
border: 5sc, rep from * to **, 2sc, Bsc.

Row 120: with Yarn1

border: Bsc, 2dc,

*sc, dc, sc, 3dc, sc (in tr), dc (in dc behind tr),
11sc, dc (in dc behind tr), sc (in tr), 3dc (1st in
3rd of 5dc), sc, dc, sc**,
dc, 3sc, dc,

giraffe: sc, sk dec, inc (in 1st of 3sc), 15dc (first
2 in sc), dec, 11sc (6th in dec), sk dec,

*with Yarn3 2/-dc (in 2sc behind dec), dec (in
2dc),*

sk dc, inc (in dc bet posts of skipped dc and
next dc), sc (in 1st of 2dc), sk 2nd dc, 2/-dc (in
inc), sk dc, 2/-dc (in inc), sc (in dc), 13dc, inc,
sk dc, sc (in dc), 3dc, sc, 2dc (in inc), sc (in
dc),

*with Yarn3 3\dc (in 2dc and sc), sk dec, 2sc,
5sc, sk dec, 3/-dc, 10sc (1st in sc, last in dec),
6dc (1st in sc), inc, sk dec, 12sc (first 4 in dc),*

border: dc, 3sc, dc, rep from * to **, 2dc, Bsc.

Row 121: with Yarn2

border: Bsc, 2sc,

*[dc, sc]x2, sk 2dc, /-FPtr, 17sc (1st in 2nd
skipped dc behind tr, 3rd, 15th and last in dc),
\-FPtr, sk dc, [sc (in dc), dc]x2**,
[sc, dc]x2, sc,

giraffe: dec (2nd leg in dec), 17sc, sk dec, inc,
9dc (5th in dec), dec (2nd leg in dec), 2sc, sk dec,
1/-dc (in dc bet posts of skipped dec and inc),
sc (in 1st dc of inc), sk 2nd dc, 2/-dc (in 2dc), sc
(in 1st of 2dc), sk 2nd dc, 1/-dc (in dc bet posts
of skipped and next dc), 2sc, dc, 15sc, 2\dc (in
2dc), sk dc, 3sc (in 2dc and sc), 1\dc (in dc),
sk dc, sc (in dc), inc (in dc), sk dc, 4sc (in 2dc
and 2sc), dec (1st leg below prev sc), 3dc, dec
(2nd leg in dec), 2sc (in 2dc), sk dc, inc (in sc),

8dc, inc (in dec), sk dc, 7sc, dec (1st leg in dec),
11dc (first 3 in dc)

border: [sc, dc]x2, sc, rep from * to **, 2sc,
Bsc.

Row 122: with Yarn1

border: Bsc, 2dc,

*[sc, dc]x2, sc (in tr), dc (in dc behind tr), 15sc,
dc (in dc behind tr), sc (in tr), [dc, sc]x2**,
dc, 3sc, dc,

giraffe: sc (in dec), 15dc, dec, 15sc (1st in sc,
13th in dec, last 2 in sc), sk dc, 2/-dc (in inc), sc
(in 1st of 2dc), sk dc, 2/-dc (in 2dc), sk dc, inc,
dc, sc, 14dc, inc, sk dc, sc, 3\dc (in 3dc), sc (in
dc), 2\dc, sk 1st dc of inc, 2sc (in 2nd dc and
sc),

*with Yarn3 dec (in 2nd and 3rd of 3dc), dc (in
sc), inc (in sc),*

sk dec, 4sc (last in dec), dec (in first 2 of 3dc),
13sc (1st in sc), dec, 6dc, 12sc (1st in dec),

border: dc, 3sc, dc, rep from * to **, 2dc, Bsc.

Row 123: with Yarn2

border: Bsc, 2sc,

*dc, sc, sk sc and dc, /-FPtr, 21sc (1st in
skipped dc behind tr, 3rd, 19th and last in dc),
\-FPtr, sk sc, sc (in dc), dc**,
5sc,

giraffe: dc (in dec), 15sc, sk dec, inc (in sc),
13dc (12th in dec, last in sc), dec (in sc and dc),
sc (in dc), sk dc, 2/-dc (in 2dc), sc (in 1st of
2dc), sk dc, dc (in dc bet posts of skipped and
next dc), 3sc, dc, 16sc, 2\dc, sk dc, 3sc (in 2dc
and sc), 1\dc (in dc), sk dc, sc (in dc), 3\dc (in
inc in sc), sk dec, 3sc, dec (1st leg in dec), 3dc
(last in dec), sk dec, inc (in sc), 11dc, inc, sk
dec, 5sc, sk dc, 3/-dc (1st in dec), 10sc (1st
behind prev dc),

border: 5sc, rep from * to **, 2sc, Bsc.

Row 124: with Yarn1

border: Bsc, 2dc,

*sc, dc, sc (in tr), dc (in dc behind tr), 19sc, dc
(in dc behind tr), sc (in tr), dc, sc**,
dc, 3sc, dc,

giraffe: sc, 13dc, dec, 19sc (in sc, 15 dc, dec,

sc, dc), sk dc, 2/-dc, sk dc, inc, 2dc, sc, 16dc, 2sc, dec, dc, inc (in sc), sk dc, 2\dc, sk dc, 3sc (in 2dc and sc),

with Yarn3 dec (1st leg in dc below prev sc), dc, 4sc (1st in dec),

16sc (last in sc), dec (1st leg below prev sc), 2dc, dec, 2sc, sk dc, inc (behind skipped dc), 9dc,

border: dc, 3sc, dc, rep from * to **, 2dc, Bsc.

Row 125: with Yarn2

border: Bsc, 30sc, [dc, sc]x2,

giraffe: dc, 13sc, sk dec, inc (in sc), 17dc (last 2 in dec and sc), dec (in 2dc), sc (in 1st of 2dc), sk dc, 1/-dc (in dc bet posts of skipped dc and inc), 4sc, dc, 16sc, dc, inc, sk dec, 3sc, 1\dc (in dc), sk dc, sc (in 2nd of 2dc), dec (in first 2 of 3dc), dc (in dc), inc (in sc), sk dec and dc, 3/-dc (1st in dec), sc (behind prev dc), sk dc, inc (in 1st dc of inc), 14dc, inc (in sc), sk dec, 2sc, sk dec, 3/-dc, 11sc,

border: [sc, dc]x2, 30sc, Bsc.

Row 126: with Yarn1

border: Bsc, 2dc,

*sc, dc, sc, 21dc (1st and last in dc), sc, dc, sc**,

dc, 3sc, dc,

giraffe: sc, 12dc, dec (2nd leg in dec), 17sc,

with Yarn3 2sc,

3sc (in dec, sc, dc), 4dc, sc, 16dc, 5sc (in 3dc and 2sc), 2\dc (1st below prev sc), sk dc, sc (in sc), 1\dc (in 2nd of 2dc), sk dec, 5sc, sk dc,

with Yarn3 2/-dc (in 2sc),

18sc, 2dec (1st leg of 1st and 2nd leg of 2nd in dec), 2sc, sk dc, inc, 10dc,

border: dc, 3sc, dc, rep from * to **, 2dc, Bsc.

Row 127: with Yarn2

border: Bsc, 2sc,

*dc, 3sc (2nd in sc), \-edc (in sc below 2nd of prev 3sc), sk dc, 17sc (1st in 3rd of 21dc), sk 2dc, /-edc (in sc bet dc-group and dc), 3sc (1st in 2nd skipped dc behind edc, 2nd in sc), dc**, 5sc,

giraffe: inc, sk dc, 11sc, sk dec, inc, 6dc, dec,

dc-edc-tog, 4sc (first 2 behind prev dec), sk dc, inc, dc, inc, sk sc, sc, dec (2nd leg in dec), dc (in sc), inc (in dc), sk dc, 3sc, inc (in dc), sk dc, 14sc, sk dc, inc, 3dc (in inc and sc), inc (in sc), sk dc, sc (in 2nd dc), 2\dc (in dc and sc), sk dc, 3dc (in dc and inc), dec, 3sc (in sc and 2dc), 7dc (first 2 in inc), inc, sk sc, 2sc, edc-dec-tog (in dc below prev 2sc), dec, 5dc, sc (in dec), sk dec, 3/-dc, 12sc,

border: 5sc, rep from * to **, 2sc, Bsc.

Row 128: with Yarn1

border: Bsc, 2dc,

*sc, dc, sc, dc (in dc behind edc), sc (in edc), 17dc (1st in 3rd of 21dc), sc (in edc), dc (in dc behind edc), sc, dc, sc**, dc, 3sc, dc,

giraffe: 2sc, dec (in first 2 dc), 9dc, dec (2nd leg in dec), 9sc (last in dec), sk dec, 3/-dc (first 2 behind skipped dec), 2sc (in sc),

with Yarn3 5sc (in dc), 2\dc (in 2sc), sk dec, sc,

4sc (in inc and 2sc), dec (1st leg below prev sc), 2sc, dec (in first 2 dc), 12dc, dec, 12sc (8th in sc),

with Yarn3 sc, sk dec, inc (in sc), 2dc, 6sc,

4sc (last in sc), 2\dc (1st below prev sc), sk dec, 10sc (1st in dec, 7th in sc), 12dc,

border: dc, 3sc, dc, rep from * to **, 2dc, Bsc.

Row 129: with Yarn2

border: Bsc, 2sc,

*dc, sc, dc, 3sc (2nd in sc), \-FPtr (in edc), sk dc, 13sc (1st in 3rd of 17dc), sk 2dc, /-FPtr (in edc), 3sc (1st in 2nd skipped dc behind tr, 2nd in sc), dc, sc, dc**,

[sc, dc]x2, sc,

giraffe: dc, inc, sk dec, 9sc, sk dec, inc, 4dc, dec, dc-edc-tog (edc-leg in dec), 4sc (first 2 in sc), sk dc, 3/-dc (in 2sc and dc), 8sc (5 in sc, 2 in dc, last in sc), dec (1st leg in dc, 2nd in 1st dc of inc), 2dc (in dc and sc), inc (in sc), sk dec, dc, inc, sk dec, 12sc, sk dec, 2/-dc (in inc), 8sc (1st behind prev dc), dec (in 2\dc), dc, dec, 11sc (in sc, 4dc, 6 in sc), dec (1st leg below prev sc), 2dc, inc (in sc), sk dc, 3sc (in dc and

2sc), edc-dc-tog (in dec and dc), dec, 6dc (3rd in sc), 12sc,

border: [sc, dc]x2, sc, rep from * to **, 2sc, Bsc.

Row 130: with Yarn1

border: Bsc, 2dc,

*[sc, dc (3rd in dc behind tr)]x3, sc (in tr), 13dc (1st in 3rd of 17dc), sc (in tr), [dc (1st in dc behind edc), sc]x3**, dc, 3sc, dc,

giraffe: 5sc (in 3dc and 2sc), dec (1st leg below prev sc), 5dc, dec (2nd leg in dec), 7sc (last in dec), sk 2nd dec, 3/-dc (in 2sc behind skipped dec and in 1st of 3dc), 2sc (in sc),

with Yarn3 2sc (in first 2 of 3dc), sk dc, inc (in sc behind skipped dc), 2dc, dec, 2sc (1st behind prev dec), dec (in 2\dc), dc (in sc), 8sc (1st in dec), dec (1st leg in dec), 10dc, dec (2nd leg in dec), 2sc (in dc), 8dc (1st behind dc), 3sc (1st and last in dec),

with Yarn3 2dc (in sc and 1st dc of inc), 5sc,

with Yarn3 dec (1st leg below prev sc), 2dc, inc (in sc), sk dec, sc,

4sc (last in sc), 3\dc (in dc and 2sc behind dec), sk 1st dec, 7sc (1st in dec), 12dc,

border: dc, 3sc, dc, rep from * to **, 2dc, Bsc.

Row 131: with Yarn2

border: Bsc, 2sc,

*[dc, sc]x2, dc, 3sc (2nd in sc), \-FPtr, sk dc, 9sc (1st in 3rd of 13dc), sk 2dc, \-FPtr, 3sc (1st in 2nd skipped dc behind tr), [dc, sc]x2, dc**, 5sc (1st and last in dc),

giraffe: 4dc (last in sc), inc (in sc), sk dec, 5sc, sk dec, inc, 4dc, dec (2nd leg in dec), 3sc (in sc and 2dc), sk dc, 3/-dc (in 2sc and dc), 6sc (first 2 in sc), sk dec, 2/-dc (in 2sc), sc (behind prev dc), 1\dc (in same sc as prev dc), sk dec, sc (in dc), dec (1st leg in dec), 6sc (1st behind dec), 2\dc (in inc), sk dec, 10sc, sk dec, 1/-dc, inc (in dc), 7sc, sk dc, inc (in dec), 2dc (2nd in dec), 2sc (in 2dc), dc (in sc), 3sc, 2\dc (1st below prev sc), sk dec, 5sc (last in sc), dec (1st leg below prev sc), 2dc, inc (in sc), sk dc, 2sc, dec (both legs in dec), 6dc, 12sc,

border: 5sc (1st and last in dc), rep from * to **, 2sc, Bsc.

Row 132: with Yarn1

border: Bsc, 2dc,

*[sc, dc]x4 (last dc in dc behind tr), sc (in tr), 9dc (1st in 3rd of 13dc), sc (in tr), dc (in dc behind tr), [sc, dc]x3, sc **, dc, 3sc, dc,

giraffe: 17sc (7-11 in sc), sk dec, 3/-dc (in sc and 2dc), 3sc (in sc and 2dc), sk dc,

with Yarn3 inc (in 1st of 2sc), 3dc (1st in sc), dec,

2sc (in sc and dc), sk dc, inc (in sc), sc (in dc), *with Yarn3 dc (in dc),*

sc (in dec), 5dc (1st behind dec), inc (in sc), sk dc, sc, dec (1st leg in dec), 8dc, dec (2nd leg in dec), 2sc, sk dc, inc (in 1st dc), 5dc, dec, 4sc, *with Yarn3 2dc,*

sc, 2dc, inc, sk dc, 3sc (in dc and 2sc),

with Yarn3 dec (1st leg below prev sc), 2dc (in dc and sc),

5sc (1st in dec), 3\dc (in 3dc), sk dec, 6sc, 12dc,

border: dc, 3sc, dc, rep from * to **, 2dc, Bsc.

Row 133: with Yarn2

border: Bsc, 2sc,

*[dc, sc]x4, 2sc (in sc and dc), \-FPtr, sk dc, 5sc (1st in 3rd of 9dc), sk 2dc, \-FPtr, 2sc (in skipped dc behind tr and sc), [sc, dc]x4 **, [sc, dc]x2, sc,

giraffe: 15dc (7-11 in sc), dec, 3sc (1st in sc), sk dc, inc (in sc), dc, dec, 5sc, sk dec, 3/-dc (in sc and 2dc), 2sc (in inc), dc, sc, inc (in dec), sk dc, 6sc, 2\dc, sk dec, 8sc, sk dec, 2/-dc (in dc and 1st dc of inc), 9sc (1st in sc, last in dec), 4dc, sc (in 1st of 2dc), sk 2nd dc, inc, 4sc, dec (in 2dc), dc (in sc), inc (in sc), sk dec, sc, sk dc, inc (in dec), 3dc, inc, sk dc, 3sc (in 2dc and sc), dec (1st leg below prev sc), 3dc, inc, sk dc, 11sc,

border: sc, [dc, sc]x2, rep from * to **, 2sc, Bsc.

Row 134: with Yarn1

border: Bsc, 2dc,

*[sc, dc]x5 (last in dc behind tr), sc (in tr), 5dc (1st in 3rd of 9dc), sc (in tr), [dc (1st in dc behind tr), sc]x5 **, dc, 3sc, dc,

giraffe: 15sc, sk dec, 4/-dc (1st in sc), 3sc,

with Yarn3 6sc (1 in dec, rem 5 in sc),

2sc (in first 2 of 3dc), sk dc, inc, dc, sc,

with Yarn3 dc,

2sc, dec (in first 2 dc), 4dc, inc, sk dc, 2sc (in dc and sc), dec (1st leg below prev sc), 4dc, dec, 2sc (in sc and dc), sk dc, inc (in sc), 8dc (last in dec), 4sc,

with Yarn3 dec (in 2dc),

2sc (in inc), 3dc, inc, sk dec, 2sc,

with Yarn3 6sc (2nd in sc),

3sc, 4\dc (in 3dc and sc), sk dec, 5sc, dec (in first 2 dc), 10dc,

border: dc, 3sc, dc, rep from * to **, 2dc, Bsc.

Row 135: with Yarn2

border: Bsc, 2sc,

*[dc, sc]x5, 2sc (in sc and dc), \-FPtr, sk dc, sc (in 3rd of 5dc), sk 2dc, /-FPtr, 2sc (in skipped dc behind tr and sc), [sc, dc]x5 **, 5sc,

giraffe: 2sc, dec (1st leg below prev sc), 10dc, dec, 4sc (1st in sc), sk dc, 4/-dc (last in dec), 5sc (1st behind prev dc), 2/-dc (in first 2 of 3dc), 4sc (1st in sc), dc, sc, dc, inc, sk dec, 7sc (last in sc), 2\dc (in 2nd of 2dc and sc), sk dec, 4sc, sk dec, 3/-dc (in sc and 2dc), 9sc, sk dc, inc, 3dc, sk dec, inc, dc, 5sc, 3\dc (1st in dec), sk sc, 5sc (1st in sc made in sc), dec (1st leg below prev sc), 2dc, 4sc (in 4dc), dec (1st leg in dec), 3dc, inc, sk dec, 10sc,

border: 5sc, rep from * to **, 2sc, Bsc.

Row 136: with Yarn1

border: Bsc, 2dc,

*[sc, dc]x6 (last in dc behind tr), sc (in tr), dc (in dc bet 2tr), sc (in tr), [dc (1st in dc behind tr), sc]x6 **, dc, 3sc, dc,

giraffe: dc, inc, sk dec, 10sc, sk dec, inc (in sc), 2dc, dec, 3sc, sk dc,

with Yarn3 inc (behind skipped dc), dc, dec, 3sc (in 2sc and dc), sk dc, inc (in sc), 3dc, 9sc (2nd and last 4 in sc), 3\dc (1st below prev sc), 10sc (3-6 and last in sc), 2dec (1st in inc), 14sc (1st behind 2nd dec; first 6 in sc), 4dc, inc, sk dc, 2sc,

with Yarn3 dec (1st leg in sc behind \-dc), 4dc, 3sc (1st in dec), 3dc, inc, sk dec, 5sc, dec (1st leg in dec), 9dc,

border: dc, 3sc, dc, rep from * to **, 2dc, Bsc.

Row 137: with Yarn2

border: Bsc, 2sc,

*[dc, sc]x6, sk sc and dc, /-FPtr (in /-tr), sc (in skipped dc behind tr), \-FPtr (in \-tr; cross prev tr), sk sc, [sc (in dc), dc]x6 **, [sc, dc]x2, sc,

giraffe: 3sc, dec (1st leg in dec), 7dc, dec, 5sc (1st in sc), sk dec, inc, 2dc, 3sc, sk dec, 4/-dc (in 2 sc and 2dc), 4sc, sk dc, inc (in dc), 7dc (2-4 in dc), inc (in sc), sk dc, sc, sk dc, inc (in 1st of 2dc), dc, 5sc, sk dc, inc (in 3rd of 3dc), dc (in sc), sc (in dec), sk dec, 3/-dc (1st behind 2nd dec), 4sc (1st behind prev dc), dec (in sc and 1st dc of inc), 6dc, inc, sk dc, 5sc, 3\dc (in 3dc), sk dec, 3sc, sk dc, inc (in dec), dc, inc, sk dc, 5sc (last in sc), dec (1st leg in dc below prev sc), 2dc, inc, sk dec, 9sc,

border: [sc, dc]x2, sc, rep from * to **, 2sc, Bsc.

Row 138: with Yarn1

border: Bsc, 2dc,

*[sc, dc]x6, sc (in tr), dc (in dc bet 2tr), sc (in tr), [dc, sc]x6 **, dc, 3sc, dc,

giraffe: 3dc, 8sc (1st in dec), sk dec, inc (in sc), 3dc, dec (2nd leg in dec), 6sc (first 4 in dc), **with Yarn3 2sc (in sc and dc), sk 2nd of 4dc, dc (in sc bet posts of skipped and next dc; push posts apart to find),**

2sc (in 2dc), 3dc, dec, 26sc (12th, 16-20, and 24th in sc), sk dc, inc (in sc behind skipped dc), dc, dec, 12sc (1st in sc, 2nd in dec, last 2 in sc), dec (1st leg below prev sc), 2dc (in inc), sc (in 1st of 3dc),

with Yarn3 8sc (3-5 in sc),

2sc (in inc), dec (in first 2), 3dc, inc (in sc), sk dec, 4sc, dec (1st leg in dec), 8dc,

border: dc, 3sc, dc, rep from * to **, 2dc, Bsc.

Row 139: with Yarn2

border: Bsc, 2sc,

*[dc, sc]x5, sk sc and dc, /-FPtr, 5sc (1st in skipped dc behind tr, 2nd and 4th in sc), \-FPtr, sk sc, [sc (in dc), dc]x5 **,

5sc,

giraffe: 3sc, 6dc (1st in dec), dec, 6sc (1st in sc), sk dec, inc, 4dc (last in sc), dec, 3sc (1st behind prev dec, 2nd in sc, last in dc), 2dc (in 2dc), 3sc, sk dec, inc, 5dc, 6sc, 2dec (1st in sc and dc), 10sc (1st behind prev dec), 2/-dc (in last 2 dc), 3sc, sk dec, inc (in sc), 10dc (1st in dec, last in sc), inc, sk dec, 2sc, dec (in first 2 of 3dc), 8sc (1st behind prev dec), 3\dc (in dc and inc), sk dec, 5sc, dec (1st leg in dec), 2dc, inc, sk dec, 8sc,

border: 5sc, rep from * to **, 2sc, Bsc.

Row 140: with Yarn1

border: Bsc, 2dc,

*[sc, dc]x5, sc (in tr), 5dc (1st and last in dc behind tr, 2nd and 4th in sc), sc (in tr), [dc, sc]x5 **,

dc, 3sc, dc,

giraffe: 3dc, 6sc, sk dec, inc (in sc), 4dc, dec (2nd leg in dec), 3sc,

with Yarn3 3sc, sk dec, inc (in 1st of 2sc), 2dc (in sc and dc),

sc (in 1st of 2dc), sk dc, 3/-dc (in 3dc), 8sc (1st in sc), 5dc, inc, sk dec, sc (in 2nd dec), 7dc (1st behind dec), dec, 4sc (in 2sc and 2dc), 2dc (in inc), dec (2nd leg in dec), 15sc (last in sc), dec (1st leg in dc below prev sc), sc (in dec),

with Yarn3 7dc (1st behind dec), inc (in sc),

sk dc, 2sc, dec (1st leg in dec), 3dc, inc, sk dec, 4sc, dec (1st leg in dec), 7dc,

border: dc, 3sc, dc, rep from * to **, 2dc, Bsc.

Row 141: with Yarn2

border: Bsc, 2sc,

*[dc, sc]x4, sk sc and dc, /-FPtr, 9sc (1st in

skipped dc behind tr, 2nd and 8th in sc), \-FPtr, sk sc, [sc (in dc), dc]x4 **, [sc, dc]x2, sc,

giraffe: 3sc, 4dc, dec, 8sc (1st in sc, last in dec), 2dc, dec, 6sc (in 3sc and 3dc), sk dc, 2/-dc (in 2dc), 2sc, sk dc, inc (in sc), 6dc, inc, sk dc, 6sc, dec (in 2dec), 7sc, sk dec, inc (in 1st of 2sc), 3dc (in sc and 2dc), 3sc (last in dec), 14dc, inc (in sc), sk dec, inc (in dec), sk dc, 7sc, sk 2nd dc of inc, inc (in 2nd of 3dc), dc, 6sc (1st in dec), dec (1st leg in dec), 3dc, 8sc (1st in dec),

border: [sc, dc]x2, sc, rep from * to **, 2sc, Bsc.

Row 142 with Yarn1

border: Bsc, 2dc,

*[sc, dc]x4, sc (in tr), 9dc (1st and last in dc behind tr, 2nd and 8th in sc), sc (in tr), [dc, sc]x4 **,

dc, 3sc, dc,

giraffe: 3dc, 4sc, sk dec, inc (in sc), 7dc, 3sc (last in dec),

with Yarn3 5dc (in 3sc and 2dc), dec,

14sc (3rd and 4th in sc), dec (in first 2dc), 5dc, sc (in dec), 3dc, dec, 8sc (first 3 in sc), 3dc (last in dec), 27sc (19-25) in sc), sk dc, inc (in dec), 5dc, 4sc (1st in dec), 8dc (1st in dec),

border: dc, 3sc, dc, rep from * to **, 2dc, Bsc.

Row 143: with Yarn2

border: Bsc, 2sc,

*[dc, sc]x3, sk sc and dc, /-FPtr, 13sc (1st in skipped dc behind tr, 2nd and 12th in sc), \-FPtr, sk sc, [sc (in dc), dc]x3 **, 5sc,

giraffe: 3sc, 2dc, dec, 11sc (1st and last in sc), 3\dc (in 2dc and dec), sk dc, 4sc, sk dec, inc (in 1st of 2dc), 12dc (2nd and 3rd in sc), inc, sk dec, 5sc, inc (in dec), sk dc, 2sc, sk dec, 3/-dc (in 3sc), 5sc (1st behind prev dc), dc (in last dc), 2sc, sk dc, inc, 15dc, inc (in 1st dc of inc), sk sc, 16sc (first 9 in sc), 4dc (1st in dec), 8sc,

border: 5sc, rep from * to **, 2sc, Bsc.

Row 144: with Yarn1

border: Bsc, 2dc,

*[sc, dc]x3, sc (in tr), 13dc (1st and last in dc behind tr, 2nd and 12th in sc), sc (in tr), [dc, sc]x3 **,
dc, 3sc, dc,

giraffe: 3dc, 2sc, sk dec, inc (in sc), 9dc, inc (in sc), sk dc, 23sc (3-6 and last in sc), dec (1st leg below prev sc), 3dc, 6sc (3rd and 4th in sc), sk dc, inc (in sc behind skipped dc), 4dc, sc, dc, dec, 20sc (last in sc), dec (1st leg below prev sc), 14dc (first 7 in sc), 4sc, 8dc,

border: dc, 3sc, dc, rep from * to **, 2dc, *Bsc*.

Row 145: with Yarn2

border: *Bsc*, 2sc,

*[dc, sc]x2, sk sc and dc, /-FPtr, 17sc (1st in skipped dc behind tr, 2nd and 16th in sc), \-FPtr, sk sc, [sc (in dc), dc]x2 **,
[sc, dc]x2, sc,

giraffe: 2sc, sk dc, 3/-dc (last in dec), 18sc (13 in dc, 5 in sc), inc (in 1st dc of inc), 11dc, dec, sc (behind dec), 2dc (in inc), inc (in sc), sk dec, 3sc, dec (in inc), 11sc (first 5 in sc), dc, 2sc (2nd in dec), dc (in 1st dc of inc), dec, 2sc (1st behind prev dec), dec (1st leg below prev sc), 14dc, inc (in sc), sk dec, 13sc, sk dc, inc, 3dc, 8sc

border: [sc, dc]x2, sc, rep from * to **, 2sc, *Bsc*.

Row 146: with Yarn1

border: *Bsc*, 2dc,

*[sc, dc]x2, sc (in tr), 17dc (1st and last in dc behind tr, 2nd and 16th in sc), sc (in tr), [dc, sc]x2 **,
dc, 3sc, dc,

giraffe: dc, dec, 4sc (last in sc), dec (in inc), 14dc (last 3 in sc), dec, 14sc (1st in sc), sk dec, inc (behind dec), 4sc, dec (1st leg in dec), 2dc, sc (in dec), 11dc (first 5 in sc), sc (in dc), 2dc (in dc and dec), 2sc (in dc and dec), dc (in 1st of 2sc behind dec), inc (in 2nd sc), sk dec, 34sc (17-29 in sc), 8dc,

border: dc, 3sc, dc, rep from * to **, 2dc, *Bsc*.

Row 147: with Yarn2

border: *Bsc*, 2sc,

*dc, sc, sk sc and dc, /-FPtr, 21sc (1st in skipped

dc behind tr, 2nd and 20th in sc), \-FPtr, sk sc, sc (in dc), dc **,
5sc,

giraffe: 2sc (2nd in dec), 3dc, inc (in sc), sk dec, 14sc, sk dec, inc (in sc), 12dc, dec (2nd leg in dec), 2sc, dc, 2sc, dec (in inc), 2sc (1st in dec), sk dc, inc (in dec), 11sc, inc (in dc), sk 2dc, inc (in dc), dc (in dec), 3sc, dec (1st leg in dec), 18dc (last 3 in sc), dec, 7sc (1st behind prev dec), dec (1st leg below prev sc), 5dc (1st in sc), inc, sk dc, 7sc,

border: 5sc, rep from * to **, 2sc, *Bsc*.

Row 148: with Yarn1

border: *Bsc*, 2dc,

*sc, dc, sc (in tr), 21dc (1st and last in dc behind tr, 2nd and 20th in sc)), sc (in tr), dc, sc **,
dc, 3sc, dc,

giraffe: dc, inc (in dec), sk dc, 33sc (5-18 in sc, last in dec), 2dc, sc, 2dc, sc (in dec), dc (in dec), dec, sc (in 1st dc of inc), sk 2nd dc, 3/-dc (in first 3dc), 8sc (1st behind prev dc), 2\dc (1st in dc below prev sc), sk 1st dc of inc, 4sc, 2dc, inc, sk dec, 19sc (last in dec), 7dc (in sc), 8sc (1st in dec), dec (in first 2 dc), 3dc, dec, 2sc (1st behind prev dec),

border: dc, 3sc, dc, rep from * to **, 2dc, *Bsc*.

Row 149: with Yarn2

border: *Bsc*, 30sc, [dc, sc]x2,

giraffe: 3sc, dec (in first 2dc), 32dc (4-17 in sc, last in dec), sc, sk dc, inc (in dc), 2sc, dc (in dec), sc (in dc), sk dec, 2/-dc (in inc), 2sc, sk dc, inc (behind skipped dc), 6dc, inc, sk dc, sc, dec (in inc), dc, 2sc, 1\dc (in dc below prev sc), sk dc, 3sc, dec (1st leg in dec), 18dc (last in dec), 7sc, 7dc (1st in dec), inc, sk dec, 3sc, sk dec, inc (behind skipped dec), dc,

border: [sc, dc]x2, 30sc, *Bsc*.

Row 150: with Yarn1

border: *Bsc*, 2dc,

*[sc, dc]x2, 19sc, [dc, sc]x2, **,
dc, 3sc, dc,

giraffe: 2dc, inc, sk dec, 31sc, sk dc, 2/-dc (in

2dc), sc, sk 2nd dc of inc, 2inc, sk dc, 2sc (in sc and dc), sk dc, 2/-dc (in first 2 of 3dc), 11sc (1st in sc), dec (in 2dc), 2sc (1st in dec), 2dc, sc, dec, dc, inc, sk dec, 18sc, 7dc, 15sc (10-12 in sc),

border: dc, 3sc, dc, rep from * to **, 2dc, *Bsc*.

Row 151: with Yarn2

border: *Bsc*, 2sc,

*dc, 3sc (2nd in sc), \-edc (in sc below 2nd of prev 3sc), sk sc, 17sc (1st in 2nd of 19sc), sk sc and dc, /-edc (in sc bet 2dc), 3sc (1st in skipped dc behind edc, 2nd in sc), dc **, 5sc,

giraffe: 5sc (last in sc), dec (1st leg in dc below prev sc), 28dc, dec, sc, sk dc, 2/-dc (in inc), 4sc, dec (in dc and sc), dec (in 2dc), sc, sk dc, inc (in sc), 9dc, inc, sk dec, 2dc (1st in dec), 2sc, inc (in dc), sk dec, 3sc, dec (1st leg in dec), 17dc, 6sc, sk dc, inc, 14dc (9-11 in sc),

border: 5sc, rep from * to **, 2sc, *Bsc*.

Row 152: with Yarn1

border: *Bsc*, 2dc,

*[sc, dc]x2, sc (in \-edc), dc, 15sc, dc, sc (in /-edc), [dc, sc]x2**, dc, 3sc, dc,

giraffe: 4dc, inc (in sc), sk dec, 28sc, sk dec, 2/-dc, sc, sk dc, inc, 2dc, inc, sk dec, 16sc (1st in dec, 2nd in sc), sk dc, 2inc, sk 1st dc of inc, sc, dec (1st leg in dec), dc, inc, sk dec, 17sc, 5dc, dec, 16sc,

border: dc, 3sc, dc, rep from * to **, 2dc, *Bsc*.

Row 153: with Yarn2

border: *Bsc*, 2sc,

*dc, sc, dc, 3sc (2nd in sc), \-FPtr (in edc), sk sc, 13sc (1st in 2nd of 15sc), sk sc and dc, /-FPtr (in edc), 3sc (1st in skipped dc behind tr), dc, sc, dc**, [sc, dc]x2, sc,

giraffe: 6sc, dec (1st leg in dec), 8dc, dec, 8sc (1st behind prev dec), dec (1st leg below prev sc), 8dc, dec (2nd leg in dec), sc, sk dc, 2/-dc (in 2dc), 6sc, dec (both legs in dec), 14dc (1st in sc), dec, 4sc (in 2inc), 2\dc (in inc), sk dec,

3sc, dec (1st leg in dec), 8dc, dec, 5sc (1st behind dec), 3\dc (1st below prev sc), sk dc, 5sc (last in dec), dc, dec, 4sc (1st behind prev dec), dec (1st leg below prev sc), 2dc, dec, 6sc (1st behind prev dec),

border: [sc, dc]x2, sc, rep from * to **, 2sc, *Bsc*.

Row 154: with Yarn1

border: *Bsc*, 2dc,

*[sc, dc]x2, 2dc (2nd in dc behind tr), sc (in tr), dc, 11sc, dc, sc (in tr), 2dc (1st in dc behind tr, 2nd in sc), [dc, sc]x2, **, dc, 3sc, dc,

giraffe: 6dc, 10sc (1st and last in dec), 7dc (1st behind dec), inc, sk dec, 8sc, sk dec, 2/-dc (in 2dc), 5sc (in 2dc and 3sc), 2dec (1st leg of 1st below prev sc), 17sc (1st in sc, 2nd and last in dec), 4dc, 2sc, dec (1st leg in dec), dc, inc, sk dec, 8sc, sk dec, inc (behind dec), 3dc, inc, sk dc, 2sc, dec (in first 2dc), 4dc (last in dec), sc, sk dec, inc (behind dec), 2dc, inc, sk dec, 2sc, sk dec, inc (behind dec), 5dc,

border: dc, 3sc, dc, rep from * to **, 2dc, *Bsc*.

Row 155: with Yarn2

border: *Bsc*, 2sc,

*dc, sc, dc, 5sc (4th in sc), \-FPtr, sk sc, 9sc (1st in 2nd of 11sc), sk sc and dc, /-FPtr, 5sc (1st in skipped dc behind tr, 2nd in sc), dc, sc, dc**, 5sc,

giraffe: 6sc, 10dc (1st and last in dec), 9sc, dec (1st leg in dec), 6dc, dec (2nd leg in dec), sc, sk dc, 2/-dc (in 2dc), 3sc (1st behind prev dc), 2\dc (1st in sc below prev sc), sk dec, sc (in 2nd dec), 17dc (1st in sc behind dec, 2nd and last in dec), 3sc, sk dc, 2inc (in 2dc), sk dec, 3sc, dec (1st leg in dec), 5dc, dec, 8sc (1st in sc), 3\dc (in 3dc), sk dec, 3sc, sk dc, 2/-dc (in dc and dec), 15sc (7th and 8th in sc),

border: 5sc, rep from * to **, 2sc, *Bsc*.

Row 156: with Yarn1

border: *Bsc*, 2dc,

*sc, dc, sc, 5dc (4th in sc, last in dc behind tr), sc (in tr), dc, 7sc, dc, sc (in tr), 5dc (1st in dc

behind tr, 2nd in sc), sc, dc, sc**,
dc, 3sc, dc,

giraffe: 6dc, 10sc, 8dc, inc, sk dec, 6sc, sk dec,
2/-dc, 2sc, 3dc (in 3sc), 2sc, dec (both leg in
dec), 17sc, 2dc, dec, 2sc (in inc),

with Yarn3 3sc (in inc and sc),

3\dc (in dc and inc), sk dec, 5sc, sk dec, inc (in
sc), 6dc, inc, sk dc, 2sc, dec (1st leg in dec), dc,
dec, 2sc, 15dc (7th and 8th in sc),

border: dc, 3sc, dc, rep from * to **, 2dc, Bsc.

Row 157: with Yarn2

border: Bsc, 2sc,

*dc, sc, dc, 7sc (6th in sc), \-FPtr, sk sc, 5sc (1st
in 2nd of 7sc), sk sc and dc, /-FPtr, 7sc (1st in
skipped dc behind tr, 2nd in sc), dc, sc, dc**,
[sc, dc]x2, sc,

giraffe: 5sc, sk dc, 4/-dc, 6sc (1st behind prev
dc), 2\dc (1st below prev sc), sk dc, 9sc, dec
(1st leg in dec), 4dc, dec (2nd leg in dec), 2sc,
2dc, 2sc, sk dc, 2inc, sk dec, 16dc, inc, sk dc,
2sc (in dc and dec), dc, dec, 2sc (1st behind
prev dec), dec (1st leg below prev sc), 3sc, dec
(1st leg in dec), 3dc, dec (2nd leg in dec), 10sc,
3\dc, sk dec, sc, sk dec, inc, dc, 15sc,

border: [sc, dc]x2, sc, rep from * to **, 2sc,
Bsc.

Row 158: with Yarn1

border: Bsc, 2dc,

*sc, dc, sc, 7dc (6th in sc, last in dc behind tr),
sc (in tr), dc, 3sc, dc, sc (in tr), 7dc (1st in dc
behind tr, 2nd in sc), sc, dc, sc**,
dc, 3sc, dc,

giraffe: 3dc, dec, 4sc (1st in sc), sk dc, inc, 5dc,
2sc, dec (in first 2dc), 7dc, inc, sk dec, 5sc (last
in dec),

with Yarn3 2dc, sc, sk dc, 3/-dc,

22sc, dec (in 2dc), dc (in dec), sc, sk dec,

with Yarn3 2inc (in 2sc), sk dc, 3dc,

5sc (1st and last in dec), 10dc, 6sc (4th in sc), sk
dc, inc, 14dc,

border: dc, 3sc, dc, rep from * to **, 2dc, Bsc.

Row 159: with Yarn2

border: Bsc, 2sc,

*dc, sc, dc, 9sc (8th in sc), \-FPtr, sk sc, sc (in
2nd of 3sc), sk sc and dc, /-FPtr, 9sc (1st in
skipped dc behind tr, 2nd in sc), dc, sc, dc**,
5sc,

giraffe: 3sc, sk dec, 4/-dc (1st in sc), 7sc (1st in
sc), sk dc, inc, dc, 10sc (1st in dec), dec (1st leg
in dec), 4dc (last in dec), 6sc (3rd in sc), 22dc,
sc (in dec), sk dc, 2/-dc (in dc and dec), 7sc,
5dc (1st and last in dec), 10sc, 5dc (4th in sc),
dec, 16sc,

border: 5sc, rep from * to **, 2sc, Bsc.

Row 160: with Yarn1

border: Bsc, 2dc,

*sc, dc, sc, 9dc (8th in sc, last in dc behind tr),
sc (in tr), dc (in sc bet 2tr), sc (in tr), 9dc (1st in
dc behind tr, 2nd in sc), sc, dc, sc**,
dc, 3sc, dc,

giraffe: dc, dec, 4sc (1st in sc), sk dc, inc (in sc),
5dc, dec, 2sc, sk dc, inc (in dec), 8dc, inc, sk
dec, 4sc,

with Yarn3 5dc (3rd in sc), inc, sk dc, 2sc,

20sc (last in sc),

with Yarn3 sc, sk dc, inc, 6dc,

5sc, 10dc, 5sc, sk dec, inc, 15dc,

border: dc, 3sc, dc, rep from * to **, 2dc, Bsc.

Row 161: with Yarn2

border: Bsc, 2sc,

*dc, sc, dc, 9sc (in dc), sk sc and dc, /-FPtr
(in /-tr), sc (in skipped dc behind tr), \-FPtr
(in \-tr; cross prev tr), sk sc, 9sc (in dc), dc, sc,
dc**,
[sc, dc]x2, sc,

giraffe: sc, sk dec, 4/-dc (1st in sc), 8sc (1st in
sc), sk dec, 3/-dc, 13sc (last in sc), dec (1st leg
below prev sc), 2dc, 7sc, dec (in first 2dc), sc,
10dc, dec, 6sc (1st behind dec), dec (1st leg
below prev sc), dc, inc (in sc), 8sc (first 2 in
inc), 5dc, 10sc, 2dc, dec, 19sc (first 2 in sc),
border: [sc, dc]x2, sc, rep from * to **, 2sc,
Bsc.

Row 162: with Yarn1

border: Bsc, 2dc,

*sc, dc, sc, 9dc, sc (in tr), dc (in dc bet 2tr), sc

(in tr), 9dc, sc, dc, sc**,
dc, 3sc, dc,

giraffe: 4sc (1st in sc), sk dc, inc (in sc), 5dc,
dec, 3sc (1st in sc), sk dc, inc, 12dc (last in sc),
3sc (1st in dec),

with Yarn3 7dc, sk dec, inc (in sc),

10sc, sk dec, inc (behind dec), 4dc, inc, sk dec,
3sc,

with Yarn3 dec (in sc and 1st dc of inc), 7dc,
4sc, sk dc, inc, 9dc, 2sc, sk dec, inc (in 1st of
2sc), 18dc (1st in sc),

border: dc, 3sc, dc, rep from * to **, 2dc, Bsc.

Row 163: with Yarn2

border: Bsc, 2sc,

*dc, sc, dc, 7sc, sk 2dc, /-FPtr, 5sc (1st in 2nd
skipped dc behind tr, 2nd and 4th in sc), \-FPtr,
sk dc, 7sc (1st in 3rd of 9dc), dc, sc, dc**,
5sc,

giraffe: dc (in sc), dec (in first 2 of 4dc), 9sc
(first 2 in sc), sk dec, 3/-dc (1st in sc), 15sc (1st
in sc), 2dc (1st in dec), inc, sk dc, 7sc, sk dc, inc
(in 1st dc), 3dc, dec, 13sc (1st behind prev dec;
first 5 in sc), dec (1st leg in dec), dc, inc, sk dec,
6sc, sk dc, inc, 2dc, dec, 10sc, sk dc, 3/-dc (3rd
in dec), 20sc,

border: 5sc, rep from * to **, 2sc, Bsc.

Row 164: with Yarn1

border: Bsc, 2dc,

*sc, dc, sc, 7dc, sc (in tr), dc (in dc behind tr),
3sc, dc (in dc behind tr), sc (in tr), 7dc (1st in 3rd
of 9dc), sc, dc, sc**,
dc, 3sc, dc,

giraffe: sc (in dc), sk dec, inc (in 1st of 2sc), 7dc
(1st in sc), dec (2nd leg in dec), 2sc, sk dc, inc
(in sc), 13dc, inc, sk dc, 4sc (last in sc),

**with Yarn3 dec (1st leg in dc below prev sc),
4dc, dec (in inc),**

5sc, sk dec, inc (behind skipped dec), 11dc
(first 4 in sc), inc, sk dec, 3sc,

with Yarn3 dec (1st leg in dec), 3dc, dec,

5sc (1st in sc), sk dec, inc, 8dc, dec, 2sc, sk dc,
inc, 19dc,

border: dc, 3sc, dc, rep from * to **, 2dc, Bsc.

Row 165: with Yarn2

border: Bsc, 2sc,

*dc, sc, dc, 5sc, sk 2dc, /-FPtr, 9sc (1st in 2nd
skipped dc behind tr), \-FPtr, sk dc, 5sc (1st in
3rd of 7dc), dc, sc, dc**,

[sc, dc]x2, sc,

giraffe: 10sc (1st in sc), sk dec, 3/-dc (in 3dc),
17sc, dec (in 2dc), 2dc (in inc), inc (in sc), sk
dec, 4sc, sk dec, inc, 2dc, dec, 16sc (1st in sc),
dec (1st leg in dec), dc, inc, sk dec, 3sc, sk dec,
inc (in sc), dc, dec, 12sc (first 2 in sc), sk dec,
3/-dc, 21sc,

border: [sc, dc]x2, sc, rep from * to **, 2sc,
Bsc.

Row 166: with Yarn1

border: Bsc, 2dc,

*sc, dc, sc, 5dc, sc (in tr), dc (in dc behind tr),
7sc, dc (in dc behind tr), sc (in tr), 5dc (1st in 3rd
of 7dc), sc, dc, sc**,
dc, 3sc, dc,

giraffe: 9dc (1st in sc), dec (2nd leg in dec), 2sc,
sk dc, inc, 15dc, inc, sk dec, 12sc (5-8 in sc), sk
dec, inc (in sc), 14dc, inc, sk dec, 9sc (4-6 in
sc), sk dec, inc (in 1st of 2sc), 10dc (1st in sc),
dec (2nd leg in dec), 2sc, sk dc, inc, 20dc,

border: dc, 3sc, dc, rep from * to **, 2dc, Bsc.

Row 167: with Yarn2

border: Bsc, 2sc,

*dc, sc, dc, 3sc, sk 2dc, /-FPtr, 13sc (1st in 2nd
skipped dc behind tr), \-FPtr, sk dc, 3sc (1st in
3rd of 5dc), dc, sc, dc**,
5sc,

giraffe: 10sc (last in dec), dc, dec, 19sc, dec (1st
leg in dec), 9dc (4-7 in sc), dec, 19sc (1st in sc
behind prev dec), dec (1st leg in dec), 5dc (in
inc and 3sc), dec (in inc), 14sc (first 2 in sc), sk
dec, 3/-dc (in 3dc), 22sc,

border: 5sc, rep from * to **, 2sc, Bsc.

Row 168: with Yarn1

border: Bsc, 2dc,

*sc, dc, sc, 3dc, sc (in tr), dc (in dc behind tr),
11sc, dc (in dc behind tr), sc (in tr), 3dc (1st in
3rd of 5dc), sc, dc, sc**,

dc, 3sc, dc,

giraffe: 10dc, 2sc (2nd in dec), 18dc, inc, sk dec, 9sc, sk dec, inc (in sc behind skipped dec), 17dc, inc, sk dec, 5sc, sk dec, inc (in 1st of 2sc), 12dc (1st in sc), dec (2nd leg in dec), 2sc, sk dc, inc (in 1st dc of inc), 21dc,

border: dc, 3sc, dc, rep from * to **, 2dc, *Bsc*.

Row 169: with Yarn2

border: *Bsc*, 2sc,

*[dc, sc]x2, sk 2dc, /-FPtr, 17sc (1st in 2nd skipped dc behind tr, 3rd, 15th and last in dc), \-FPtr, sk dc, [sc (in dc), dc]x2**, [sc, dc]x2, sc,

giraffe: 9sc, sk dc, inc, dc (in dec), 20sc, dec (1st leg in dec), 6dc, dec, 22sc (1st in sc behind prev dec), dec (1st leg in dec), dc, dec, 16sc (first 2 in sc), sk dec, 3/-dc, 23sc,

border: [sc, dc]x2, sc, rep from * to **, 2sc, *Bsc*.

Row 170: with Yarn1

border: *Bsc*, 2dc,

*[sc, dc]x2, sc (in tr), dc (in dc behind tr), 15sc, dc (in dc behind tr), sc (in tr), [dc, sc]x2**, dc, 3sc, dc,

giraffe: 8dc, dec, 3sc, 20dc, 7sc (1st in dec), sk dec, inc (in sc behind dec), 21dc, 3sc (1st and 3rd in dec), 15dc (first 2 in sc), dec (2nd leg in dec), 2sc, sk dc, inc (in 1st dc of inc), 22dc,

border: dc, 3sc, dc, rep from * to **, 2dc, *Bsc*.

Row 171: with Yarn2

border: *Bsc*, 2sc,

*dc, sc, sk sc and dc, /-FPtr, 21sc (1st in skipped dc behind tr, 3rd, 19th and last in dc), \-FPtr, sk sc, sc (in dc), dc**, 5sc,

giraffe: 8sc, sk dec, inc, 2dc, 20sc, 5dc (1st in dec), dec, 23sc (1st in sc), sk dc, inc (in dec), 2dc (2nd in dec), 15sc, sk dec, 3/-dc, 24sc,

border: 5sc, rep from * to **, 2sc, *Bsc*.

Row 172: with Yarn1

border: *Bsc*, 2dc,

*sc, dc, sc (in tr), dc (in dc behind tr), 19sc, dc

(in dc behind tr), sc (in tr), dc, sc**,

dc, 3sc, dc,

giraffe: 7dc, dec (2nd leg in dec), 3sc, sk dc, inc, 19dc, 5sc, sk dec, inc (in sc behind dec), 21dc, dec, 4sc, 13dc, dec, 4sc (1st in sc), 21dc, dec, 2sc (1st behind prev dec),

border: dc, 3sc, dc, rep from * to **, 2dc, *Bsc*.

Row 173: with Yarn2

border: *Bsc*, 30sc, [dc, sc]x2,

giraffe: 7sc, sk dec, inc, dc, dec, 20sc, sk dc, inc, 3dc, dec (2nd leg in dec), 23sc, sk dec, inc, 2dc, inc, sk dc, 12sc, sk dec, inc (in sc), 2dc, inc, sk dc, 20sc, sk dec, inc (in 1st of 2sc), dc,

border: [sc, dc]x2, 30sc, *Bsc*.

Row 174: with Yarn1

border: *Bsc*, 2dc,

*sc, dc, sc, 21dc (1st and last in dc), sc, dc, sc**, dc, 3sc, dc,

giraffe: 4dc, dec, 5sc (first 2 in sc), sk dec, inc, 18dc, dec, 5sc, sk dec, inc, 20dc, dec, 9sc (1st and last 2 in sc), dec (1st leg below prev sc), 6dc, dec, 8sc (first 2 in sc), dec (in first 2dc), 17dc, dec, 4sc (1st in sc),

border: dc, 3sc, dc, rep from * to **, 2dc, *Bsc*.

Row 175: with Yarn2

border: *Bsc*, 2sc,

*dc, 3sc (2nd in sc), \-edc (in sc below 2nd of prev 3sc), sk dc, 17sc (1st in 3rd of 21dc), sk 2dc, /-edc (in sc bet dc-group and dc), 3sc (1st in 2nd skipped dc behind edc, 2nd in sc), dc**, 5sc,

giraffe: 4sc, sk dec, inc (in 1st of 2sc), 2dc (in sc and dc), dec, 22sc (1st in sc, last in dec), 4dc, dec (2nd leg in dec), 22sc, sk dec, inc (in sc), 7dc (last in sc), inc (in sc), sk dec, 6sc, sk dec, inc (in 1st of 2sc), 6dc (1st in sc), inc, sk dec, 17sc, sk dec, inc (in sc), 3dc,

border: 5sc, rep from * to **, 2sc, *Bsc*.

Row 176: with Yarn1

border: *Bsc*, 2dc,

*sc, dc, sc, dc (in dc behind edc), sc (in edc),

17dc (1st in 3rd of 21dc), sc (in edc), dc (in dc behind edc), sc, dc, sc**,
dc, 3sc, dc,

giraffe: 8sc (first 4 in sc), sk dec, inc (in sc), 21dc (last in dec), 4sc, sk dec, inc, 18dc, dec, 31sc (first 2, 14-19, and last 2 in sc), dec (1st leg below prev sc), 11dc, dec, 7sc (first 2 in sc),

border: dc, 3sc, dc, rep from * to **, 2dc, *Bsc*.

Row 177: with Yarn2

border: *Bsc*, 2sc,

*dc, sc, dc, 3sc (2nd in sc), \-FPtr (in edc), sk dc, 13sc (1st in 3rd of 17dc), sk 2dc, /-FPtr (in edc), 3sc (1st in 2nd skipped dc behind tr, 2nd in sc), dc, sc, dc**,
[sc, dc]x2, sc,

giraffe: 8dc (first 4 in sc), 22sc, sk dc, inc, 2dc, dec (2nd leg in dec), 20sc, sk dec, inc (in 1st of 2sc), 3dc (1st in sc), dec, 5sc (1st behind prev dec), dec (1st leg below prev sc), 11dc (3-8 in sc), dec, 4sc (1st behind dec), dec (1st leg below prev sc), 2dc (in dc and sc), inc, sk dec, 11sc, sk dec, inc (in 1st of 2sc), 6dc (1st in sc),

border: [sc, dc]x2, sc, rep from * to **, 2sc, *Bsc*.

Row 178: with Yarn1

border: *Bsc*, 2dc,

*[sc, dc (3rd in dc behind tr)]x3, sc (in tr), 13dc (1st in 3rd of 17dc), sc (in tr), [dc (1st in dc behind edc), sc]x3**,
dc, 3sc, dc,

giraffe: 8sc, 21dc, dec, 4sc, sk dec, inc, 16dc, dec, 7sc (first 2 in sc), sk dec, inc (behind skipped dec), 3dc, inc, sk dec, 11sc, sk dec, inc (behind skipped dec), 3dc, 24sc (1st in dec, 6-16 in sc),

border: dc, 3sc, dc, rep from * to **, 2dc, *Bsc*.

Row 179: with Yarn2

border: *Bsc*, 2sc,

*[dc, sc]x2, dc, 3sc (2nd in sc), \-FPtr, sk dc, 9sc (1st in 3rd of 13dc), sk 2dc, /-FPtr, 3sc (1st in 2nd skipped dc behind tr, 2nd in sc), [dc, sc]x2, dc**,

5sc (1st and last in dc),

giraffe: 7dc, inc, sk dc, 20sc, sk dec, inc, 2dc, dec (2nd leg in dec), 18sc, sk dec, inc (in 1st of 2sc), 3dc (1st in sc), dec, 10sc (first 2 and last in sc), dec (1st leg in dc below prev sc), 6dc, dec, 7sc (first 2 in sc), 20dc, dec, 3sc (1st behind prev dec),

border: 5sc (1st and last in dc), rep from * to **, 2sc, *Bsc*.

Row 180: with Yarn1

border: *Bsc*, 2dc,

*[sc, dc]x4 (last dc in dc behind tr), sc (in tr), 9dc (1st in 3rd of 13dc), sc (in tr), dc (in dc behind tr), [sc, dc]x3, sc **,
dc, 3sc, dc,

giraffe: 10sc (last in sc), dec (1st leg below prev sc), 17dc, dec (2nd leg in dec), 5sc (last in dec), 15dc, dec, 7sc (first 2 in sc), sk dec, inc (in 1st of 2sc), 8dc (1st in sc), inc, sk dec, 6sc, sk dec, inc (in 1st of 2sc), 6dc (1st in sc), 20sc, sk dec, inc (in 1st of 3 sc), 2dc,

border: dc, 3sc, dc, rep from * to **, 2dc, *Bsc*.

Row 181: with Yarn2

border: *Bsc*, 2sc,

*[dc, sc]x4, 2sc (in sc and dc), \-FPtr, sk dc, 5sc (1st in 3rd of 9dc), sk 2dc, /-FPtr, 2sc (in skipped dc behind tr and sc), [sc, dc]x4 **,
[sc, dc]x2, sc,

giraffe: 6sc, dec (1st leg below prev sc), 2dc, inc (in sc), sk dec, 17sc, sk dec, inc, 4dc (last in dec), 15sc, sk dec, inc (in 1st of 2sc), 3dc (1st in sc), dec, 28sc (first 2 and 15-20 in sc), 5dc, dec, 3sc (1st behind prev dec), dec (1st leg below prev sc), 4dc, dec, 9sc (first 5 in sc),

border: sc, [dc, sc]x2, rep from * to **, 2sc, *Bsc*.

Row 182: with Yarn1

border: *Bsc*, 2dc,

*[sc, dc]x5 (last in dc behind tr), sc (in tr), 5dc (1st in 3rd of 9dc), sc (in tr), [dc (1st in dc behind tr), sc]x5 **,
dc, 3sc, dc,

giraffe: 5dc, inc, sk dec, 7sc (last 3 in sc), dec

(1st leg below prev sc), 12dc, dec (2nd leg in dec), 6sc, 13dc, dec, 6sc (1st in sc), sk dec, inc (in 1st of 2sc), 27dc (1st in sc), 5sc, sk dec, inc (in 1st of 3sc), dc, inc, sk dec, 4sc, sk dec, inc (in sc behind dec), 8dc (first 4 in sc),
border: dc, 3sc, dc, rep from * to **, 2dc, *Bsc*.

Row 183: with Yarn2

border: *Bsc*, 2sc,

*[dc, sc]x5, 2sc (in sc and dc), \-FPtr, sk dc, sc (in 3rd of 5dc), sk 2dc, /-FPtr, 2sc (in skipped dc behind tr and sc), [sc, dc]x5 **, 5sc,

giraffe: 8sc (last in sc), dec (1st leg in dc below prev sc), 4dc (in inc and 2sc), inc, sk dec, 12sc, sk dec, inc, 4dc, inc, sk dc, 12sc, sk dec, inc (in sc), dc, dec, 31sc (first 3 in sc), sk dc, inc, 3dc, dec (2nd leg in dec), 19sc (6-9 in sc),

border: 5sc, rep from * to **, 2sc, *Bsc*.

Row 184: with Yarn1

border: *Bsc*, 2dc,

*[sc, dc]x6 (last in dc behind tr), sc (in tr), dc (in dc bet 2tr), sc (in tr), [dc (1st in dc behind tr), sc]x6 **, dc, 3sc, dc,

giraffe: 7dc, inc (in sc), sk dec, 9sc (last 3 in sc), dec (1st leg below prev sc), 4dc, dec, 14sc (first 3 and last 3 in sc), dec (1st leg below prev sc), 6dc, dec, 4sc (1st in sc), sk dec, inc (in 1st of 3sc), 29dc (first 2 in sc), dec, 6sc (last in dec), 19dc (6-9 in sc),

border: dc, 3sc, dc, rep from * to **, 2dc, *Bsc*.

Row 185: with Yarn2

border: *Bsc*, 2sc,

*[dc, sc]x6, sk sc and dc, /-FPtr (in /-tr), sc (in skipped dc behind tr), \-FPtr (in \-tr; cross prev tr), sk sc, [sc (in dc), dc]x6 **, [sc, dc]x2, sc,

giraffe: 11sc (last 2 in sc), dec (1st leg below prev sc), 5dc (last 2 in sc), inc, sk dec, 4sc, sk dec, inc (in 1st of 3sc), 12dc (first 2 and last 2 in sc), inc, sk dec, 6sc, sk dec, inc (in sc), 2dc, dec (2nd leg in dec), 32sc (last in dec), 6dc (last in dec), 19sc,

border: [sc, dc]x2, sc, rep from * to **, 2sc, *Bsc*.

Row 186: with Yarn1

border: *Bsc*, 2dc,

*[sc, dc]x6, sc (in tr), dc (in dc bet 2tr), sc (in tr), [dc, sc]x6 **, dc, 3sc, dc,

giraffe: 10dc (last in sc), inc, sk dec, 28sc (8-11 and last in sc), dec (1st leg in dc below prev sc), 2dc, dec, 5sc (1st in sc), sk dec, inc, 31dc (last in dec), 5sc, sk dc, inc, 18dc,

border: dc, 3sc, dc, rep from * to **, 2dc, *Bsc*.

Row 187: with Yarn2

border: *Bsc*, 2sc,

*[dc, sc]x5, sk sc and dc, /-FPtr, 5sc (1st in skipped dc behind tr, 2nd and 4th in sc), \-FPtr, sk sc, [sc (in dc), dc]x5 **, 5sc,

giraffe: 14sc (last 2 in sc), dec (1st leg below prev sc), 8dc (last 4 in sc), dec (in inc), 11sc (1st behind dec), dec (1st leg below prev sc), 3dc, inc (in sc), sk dec, 2sc, sk dec, inc (in sc behind dec), 3dc, dec (2nd leg in dec), 32sc, sk dc, inc, 3dc, dec, 20sc,

border: 5sc, rep from * to **, 2sc, *Bsc*.

Row 188: with Yarn1

border: *Bsc*, 2dc,

*[sc, dc]x5, sc (in tr), 5dc (1st and last in dc behind tr, 2nd and 4th in sc), sc (in tr), [dc, sc]x5 **, dc, 3sc, dc,

giraffe: 13dc (last in sc), inc, sk dec, 8sc, sk dec, inc (in sc behind skipped dec), 9dc, inc, sk dec, 13sc (6-7 in sc, last in dec), 31dc, dec, 5sc, sk dec, inc, 19dc,

border: dc, 3sc, dc, rep from * to **, 2dc, *Bsc*.

Row 189: with Yarn2

border: *Bsc*, 2sc,

*[dc, sc]x4, sk sc and dc, /-FPtr, 9sc (1st in skipped dc behind tr, 2nd and 8th in sc), \-FPtr, sk sc, [sc (in dc), dc]x4 **, [sc, dc]x2, sc,

giraffe: 15sc, dec (1st leg in dec), 5dc, dec, 15sc

(1st and last in sc), dec (1st leg in dc below prev sc), 11dc (4-5 in sc, last in dec), 31sc, sk dec, inc, 3dc, dec (2nd leg in dec), 21sc,

border: [sc, dc]x2, sc, rep from * to **, 2sc, Bsc.

Row 190: with Yarn1 Bsc, 2dc, *[sc, dc]x4, sc (in tr), 9dc (1st and last in dc behind tr, 2nd and 8th in sc), sc (in tr), [dc, sc]x4 **, dc, 3sc, dc, 107sc, dc, 3sc, dc, rep from * to **, 2dc, Bsc.

Row 191: with Yarn2 Bsc, 2sc, *[dc, sc]x3, sk sc and dc, /-FPtr, 13sc (1st in skipped dc behind tr, 2nd and 12th in sc), \-FPtr, sk sc, [sc, dc]x3 **, 117sc, rep from * to **, 2sc, Bsc.

Row 192: with Yarn1 Bsc, 2dc, *[sc, dc]x3, sc (in tr), 13dc (1st and last in dc behind tr, 2nd and 12th in sc), sc (in tr), [dc, sc]x3 **, [dc, 3sc]x29, dc, rep from * to **, 2dc, Bsc.

Row 193: with Yarn2 Bsc, 2sc, *[dc, sc]x2, sk sc and dc, /-FPtr, 17sc (1st in skipped dc behind tr, 2nd and 16th in sc), \-FPtr, sk sc, [sc, dc]x2 **, [sc, dc]x58, sc, rep from * to **, 2sc, Bsc.

Row 194: with Yarn1 Bsc, 2dc, *[sc, dc]x2, sc (in tr), 17dc (1st and last in dc behind tr, 2nd and 16th in sc), sc (in tr), [dc, sc]x2 **, [dc, 3sc]x29, dc, rep from * to **, 2dc, Bsc.

Row 195: with Yarn2 Bsc, 2sc, *dc, sc, sk sc and dc, /-FPtr, 21sc (1st in skipped dc behind tr, 2nd and 20th in sc), \-FPtr, sk sc, sc (in dc), dc **, 117sc, rep from * to **, 2sc, Bsc.

Row 196: with Yarn1 Bsc, 2dc, *sc, dc, sc (in tr), 21dc (1st and last in dc behind tr, 2nd and 20th in sc), sc (in tr), dc, sc **, 117sc, rep from * to **, 2dc, Bsc.

Rows 197-221: rep Rows 5-29.

Fasten off Yarn2.

Row 222: with Yarn1 Bsc, 4dc, [23sc, dc]x6, 23sc, 4dc, Bsc.

Row 223: with Yarn1 Bsc, 175sc, Bsc. Fasten off. Starting with Bsc, count 11sc backwards, **pm3** in 11th sc. **Remove m1 and m2.**

Double border

Chart 4 on p. 38.

Double border video:

<https://youtu.be/Cye50q8gDMY>

Special stitches:

- **decrease:** insert hook in next 2 sts one after another and make sc or dc in both at the same time.
- **invisible join1:** take lp off hook, insert hook from WS in both lps of 1st dc, PU lp, draw to WS, ch1, take lp off hook, insert hook from RS in 2 lps above beg ch-2, PU lp, draw to RS.
- **invisible join2:** after last st cut yarn, pull lp on hook all the way to draw tail through the lp, insert hook from WS on both lps of 1st dc, PU tail and draw through st, insert hook from WS in back lp of last dc, PU tail and draw through lp, weave tail in.

Slip stitch foundation:

Blanket is 177sts x 223rows.

top: with RS of the blanket facing, join Yarn2 in m3-sc, 10ss (last in *border sc*), **remove m3**, (stitch count: 10ss)

left side: ss in Bsc at the end of each row, (224ss)

bottom: ss in both lps of each st from fnd cord except last, (175ss)

right side: sk last st of fnd cord, ss in next st after border sc of each row, (224ss)

rem top: ss in each rem st (first in 2nd sc of last row), *invisible join2*. Fasten off. (165ss)

For rem border use one size smaller hook.

Back side of double border:

Note: back side of border consists of 4 dc-rows. If you want to make it thinner, replace 4 dc-rows with 8 sc blo-rows. Make corners the same way as for the front side: sc in 1st ch of corner ch-2, ch2, sc (in 2nd ch of corner ch-2).

Number of sts on each side should be multiple of 6 minus 1 or 173sts at the top and bottom and 221sts at each side. Instructions direct you to decrease 2sts at the top and bottom and 3sts at each side. Mark spots for each decrease in advance spreading markers evenly along each side.

Rnd 1: bottom: with WS facing, with smaller hook (*use throughout double border*) join Yarn2 in slip stitch fnd at the bottom (in 10th ss counting from the corner backwards, ch2 (=dc), 9dc, ch2 (corner space),

right side: 221dc after 3 decreases (keep markers to make the same decreases for the front side of the border), ch2,

top: 173dc after 2 decreases, ch2,

left side: rep right side,

rem bottom: 163dc after 3 decreases, *invisible join1*.

Rnds 2-3: ch2, dc in every dc, (2dc, ch2, 2dc) in each corner ch-2sp, *invisible join1*.

Rnd 4: ch2, dc in every dc, (2dc, ch2, 2dc) in each corner ch-2sp, *invisible join2*. Fasten off.

Front side of double border:

Mosaic crochet rules reminder: all sc: blo; all dc: flo in 2nd rnd down; all ss: blo in 1st st with next rnd color.

Rnd 1: with RS facing, join Yarn1 in slip stitch fnd at the bottom (in back lp of 6th ss counting backwards from the corner), ch1, 6sc (1st in same st), ch2 (corner; make throughout after last sc of each side), sc blo in each fnd st and make the same decreases you've made for the border back side, ss (blo in 1st sc with next row yarn).
(221sts each side, 173sts bottom and top)

Rnd 2: bottom: with Yarn2 dc, 5sc, sc blo (in 1st ch of ch-2), ch2,
right side: sc blo (in 2nd ch), [5sc, dc]x36, 5sc, sc blo (in 1st ch of ch-2), ch2,
top side: rep right side with x28,
left side: rep right side,
rem bottom: sc blo (in 2nd ch), [5sc, dc]x35, 5sc, ss.

Rnd 3: with Yarn1 sc, 5dc,
corner: 2sc (in sc and ch), ch2, 2sc (in ch and sc),
[5dc, sc]x36, 5dc, rep *corner*, rep []x28, 5dc, rep *corner*, rep []x36, 5dc, rep *corner*, rep []x27, ss.

Rnd 4: with Yarn2 dc, 5sc,
corner: dc, 2sc (in sc and ch), ch2, 2sc (in ch and sc),
[dc, 5sc]x37, rep *corner*, rep []x29, rep *corner*, rep []x37, rep *corner*, rep []x28, ss.

Rnd 5: with Yarn1 2sc, 3dc,
corner: 5sc (2nd in dc, last in ch), ch2, 5sc (1st in ch, 4th in dc),
[3dc, 3sc]x36, 3dc, rep *corner*, rep []x28, rep *corner*, rep []x36, rep *corner*, rep []x26, 3dc, sc, ss.

Rnd 6: with Yarn2 sc, dc, 3sc, dc,
corner: 5sc (last in ch), ch2, 4sc (1st in ch),
[sc, dc, 3sc, dc]x37, rep *corner*, rep []x29, rep *corner*, rep []x37, rep *corner*, rep []x28, ss.

Rnd 7: with Yarn1 [dc, 2sc]x2,
corner: 6sc (last in ch), ch2, 8sc (1st in ch),
rep []x73, rep *corner*, rep []x57, rep *corner*, rep []x73, rep *corner*, rep []x55, ss.

Rnd 8: with Yarn2 2sc, dc, sc, dc,
corner: 8sc (last in ch), ch2, 5sc (1st in ch),
[3sc, dc, sc, dc]x37, rep *corner*, rep []x29, rep *corner*, rep []x37, rep *corner*, rep []x28, sc, keep st open.

Rnd 9 (join 2 sides of double border): fold border front to RS to access border back and count 13dc backwards from corner ch-2sp of border back, **pm4** in 13th dc (1st st to join), with Yarn2 make ss blo in 1st sc of prev Rnd 8 and at

the same time, in front lp (closest to you) of m4-dc behind it, **remove m4**, make ss in each pair of sts from 2 sides of double border (including 2ch at each corner): blo in front side, flo in back side. Fasten off.

Care

Hand-wash in lukewarm water with a bit of mild detergent, rinse, use a towel to squeeze out excess moisture, lay flat to dry.

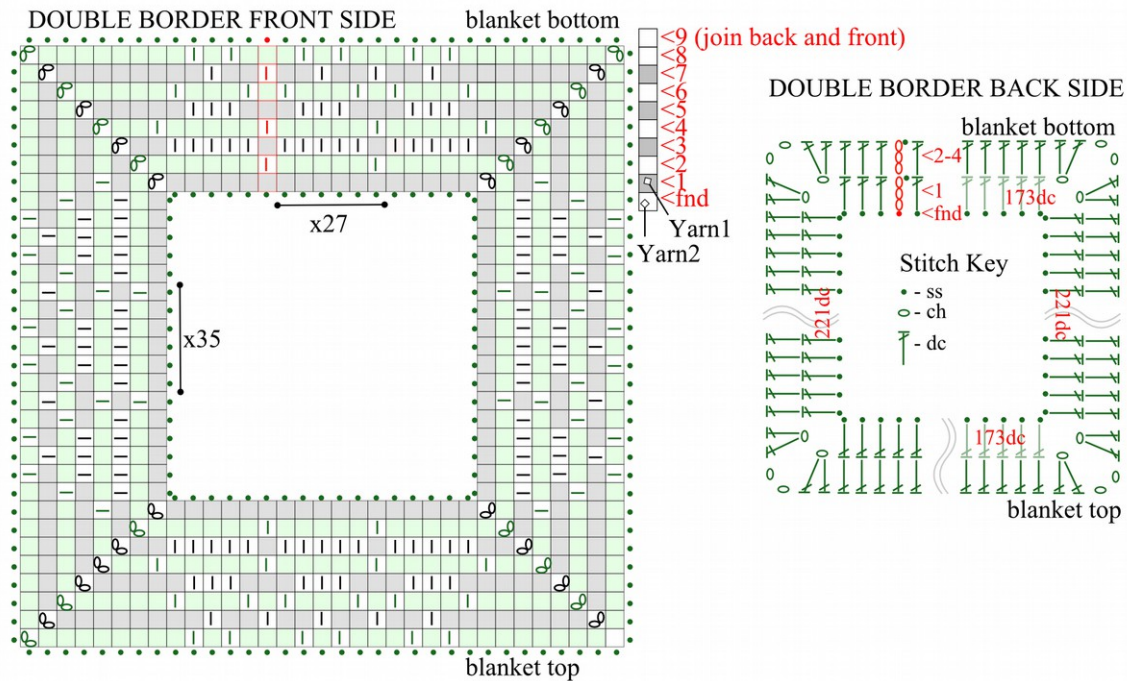


Chart 4. Double border (for hiding tails).

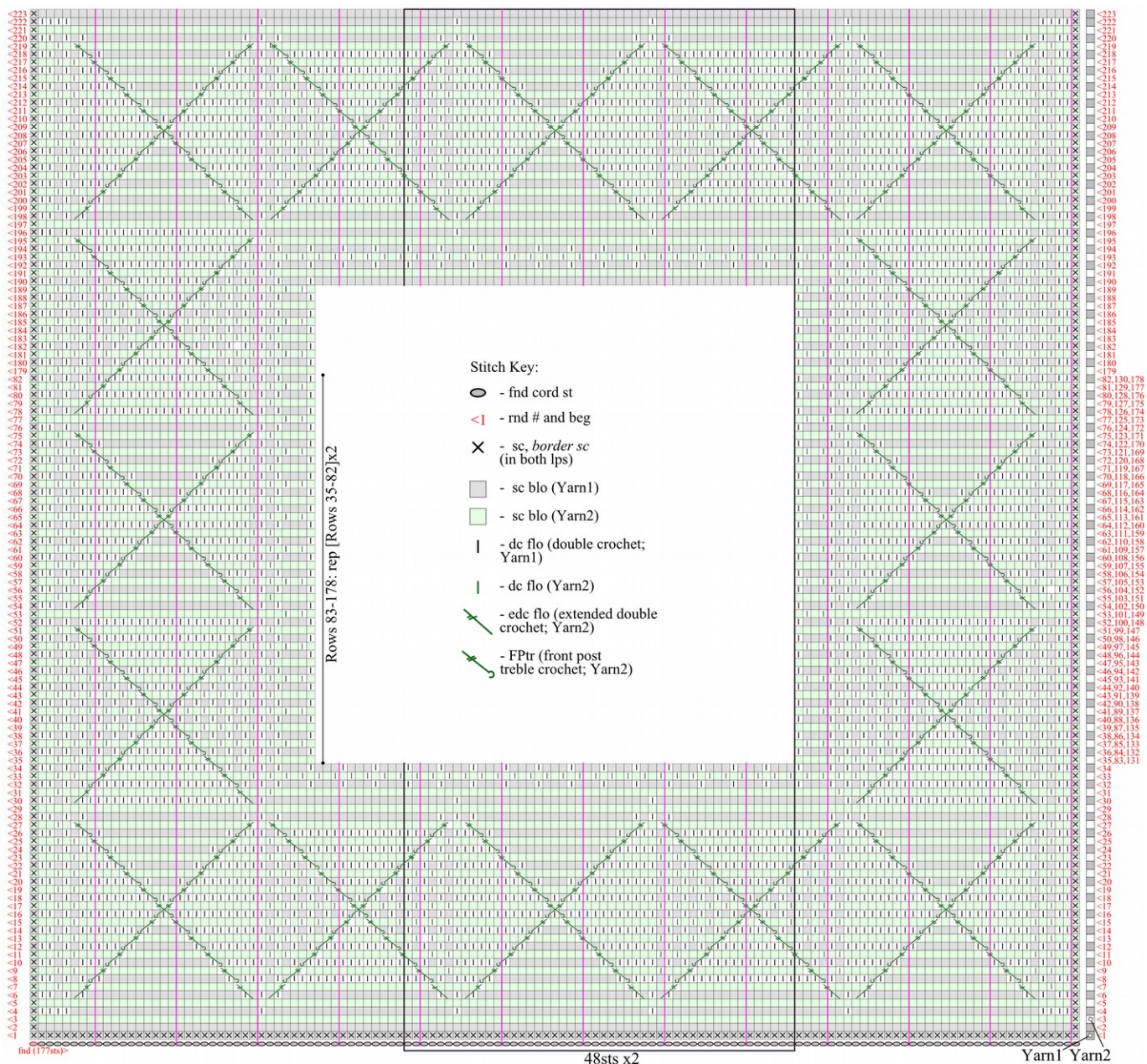


Chart 1. Border.

- *Border and Giraffe charts are separated due their big sizes, but they are made as one piece. Empty area in the middle of the border is for giraffe (Chart 2).*

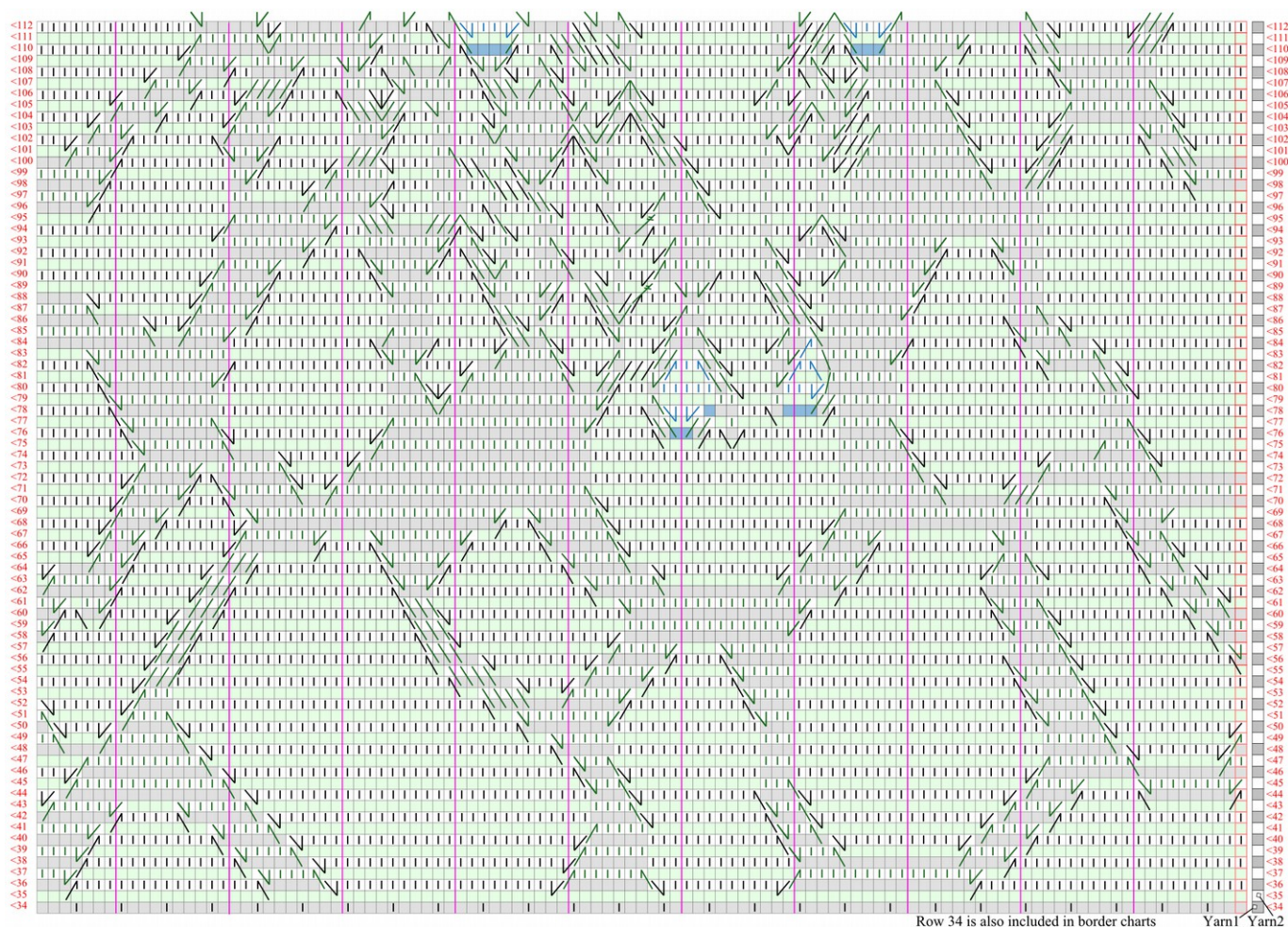




Chart 2. Giraffe. Rows 34-112.

Chart Key:

<1 - rnd # and beg


 - first st in row


 - find cord st


 - find cord st


× - sc (in both lps)


| - dc (double crochet; flo)


 - sc blo (Yarn1)

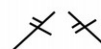
 - sc blo (Yarn2 or Yarn3)


 - sc blo (optional Yarn3 or Yarn2)


 - \-dc and /-dc (left-slanted and right-slanted dc; flo)

 - dec (2 dc together; flo)

 - inc (dc blo, dc flo) in same st

 - edc (extended dc; flo)

 - edc-dc-tog (edc and dc together)

 - dc-edc-tog (dc and edc together)

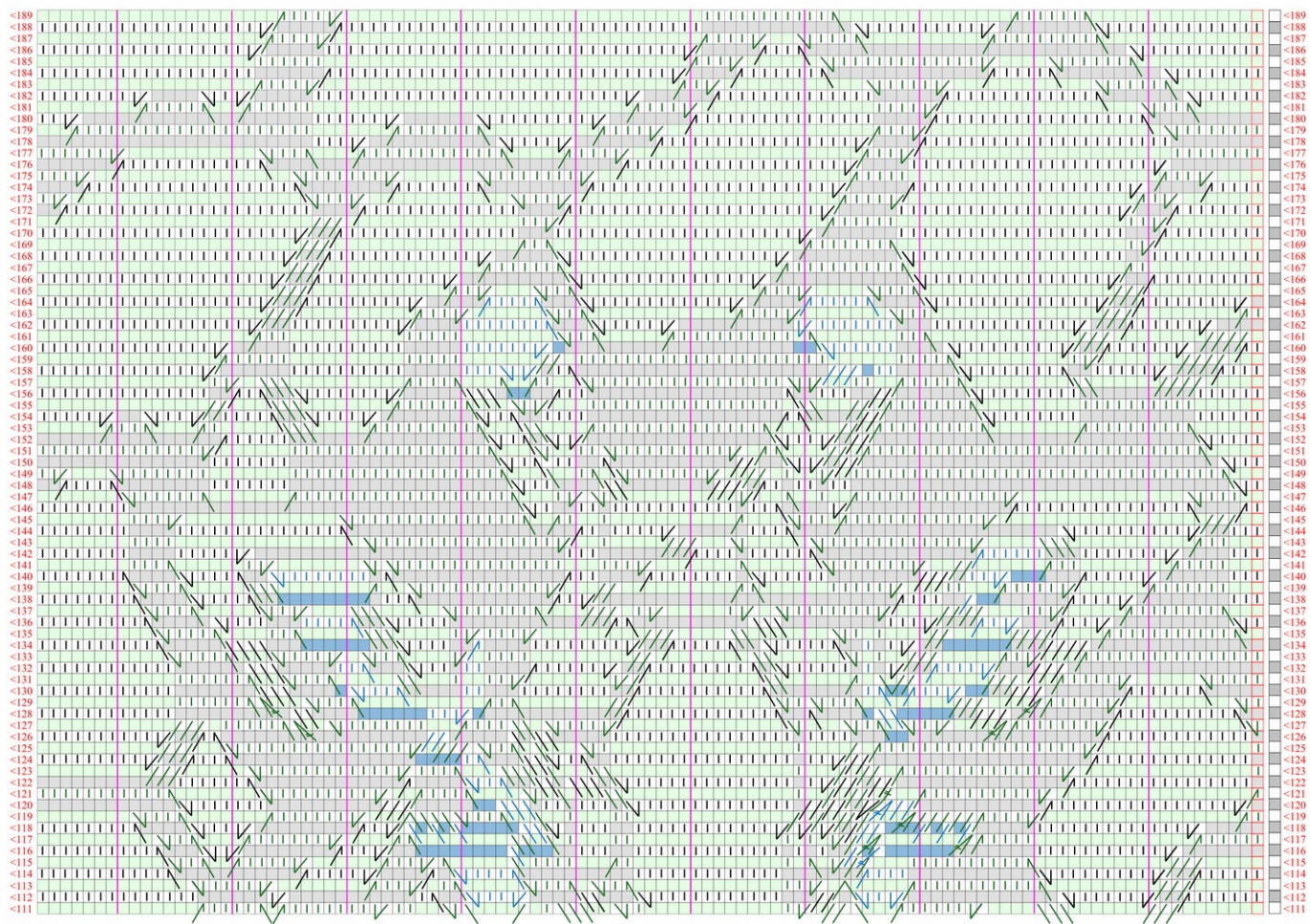


Chart 3. Giraffe. Rows 112-189.